

# Phase 1 Interim Measures Update Former DuPont Waynesboro Site, Virginia Area of Concern (AOC) 4

South River Science Team Meeting

December 11, 2018

# Agenda

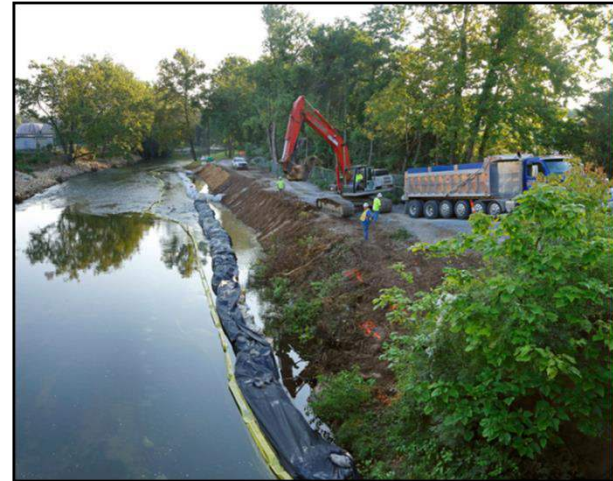
## – Allied Ready Mix BMA

- Construction Overview
- High Water Challenges
- Project Completion & Closeout

## – Shiloh Baptist Church BMA

- Regulatory
- Access
- Community Engagement

## – Path Forward



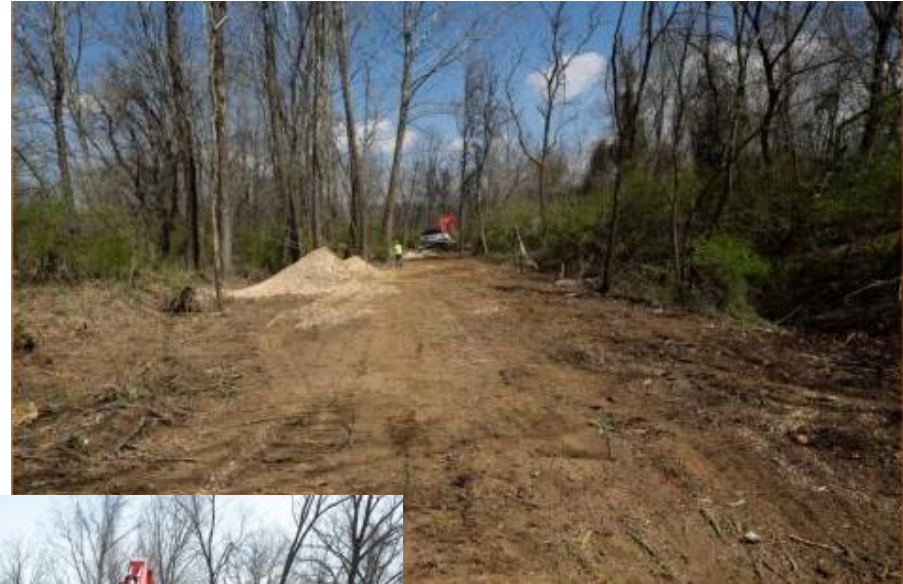
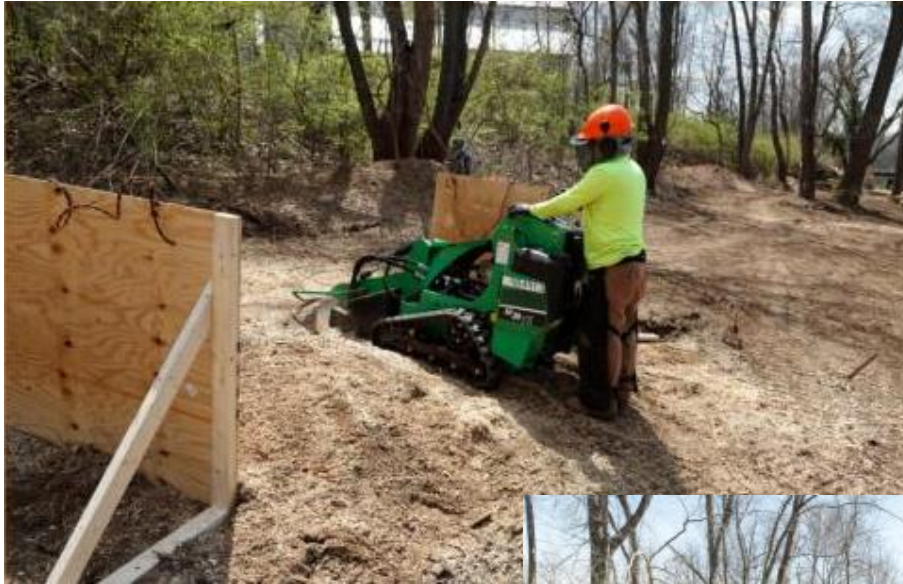
# Allied Ready Mix Construction

– Site prep/clearing – March/April 2018



# Allied Ready Mix Construction

– Site prep/clearing – March/April 2018



# Allied Ready Mix Construction

## – Access Road Installation



# Allied Ready Mix Construction

## – Primary BMA Excavation



# Allied Ready Mix Construction

– Primary BMA Excavation



# Allied Ready Mix Construction

– Primary BMA A Restoration





# Allied Ready Mix Construction

– Primary BMA A Restoration



# Allied Ready Mix Construction

– Primary BMA A Completion



# Allied Ready Mix Construction

- Geocell installation in capping area



# Allied Ready Mix Construction

- Geocell installation & Restoration at Primary BMA B



# Allied Ready Mix Construction

- Critical Slope Reduction Excavation



# Allied Ready Mix Construction

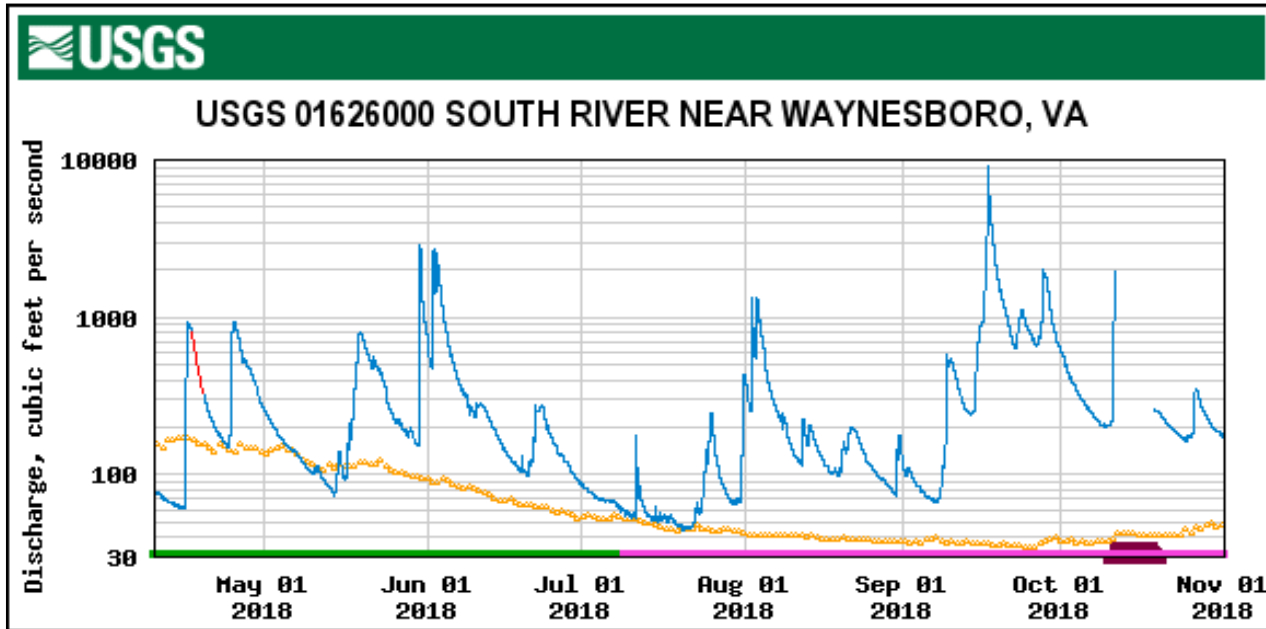
Ready for Geocell...and then...



# Allied Ready Mix Construction



# Allied Ready Mix Challenges





# Allied Ready Mix Challenges



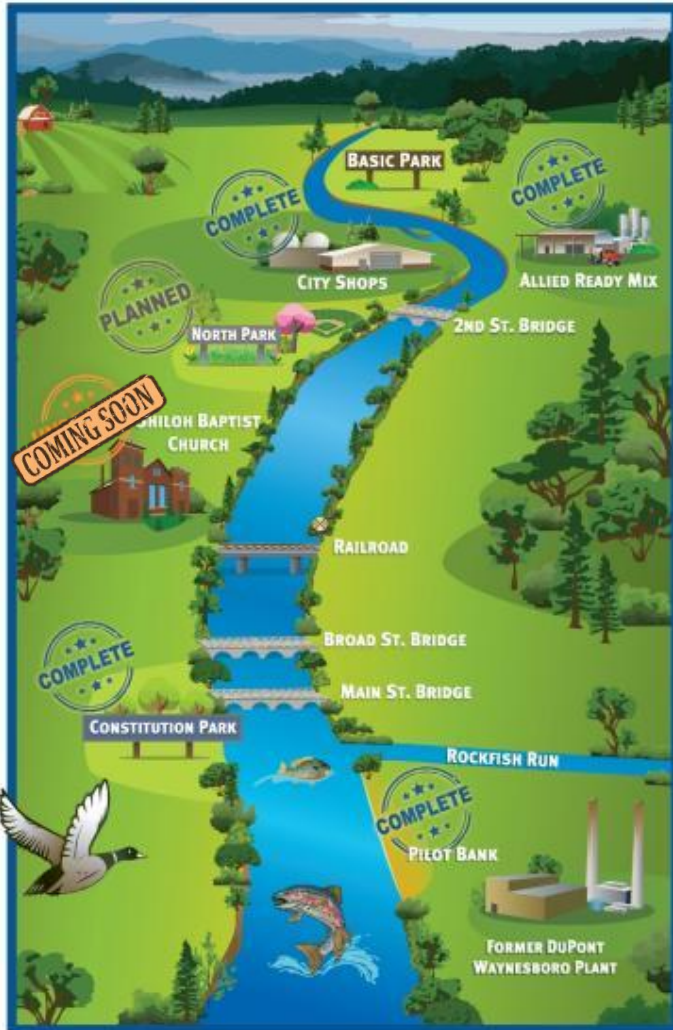
# Allied Ready Mix Completion



# Allied Ready Mix Completion



# Phase 1 Interim Measures Status



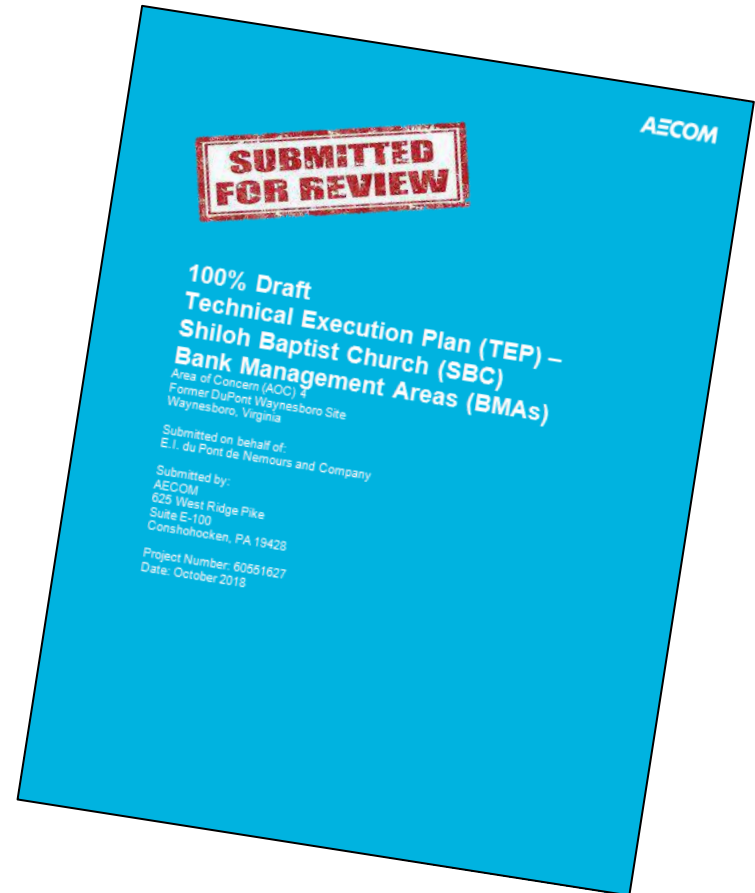
## Estimated Percent of Mercury Input Reduced to Date



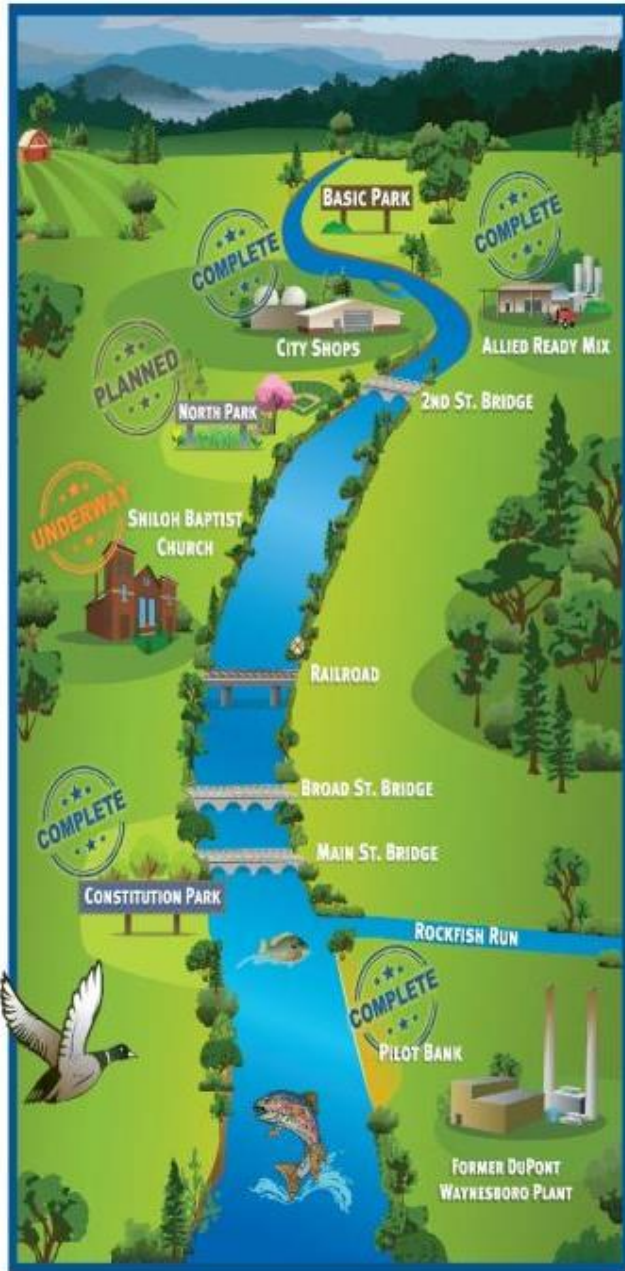
*It is estimated that the erosion of six South River riverbanks contributes appreciable mercury to the river each year. The goal of the remediation work is to stop the erosion of these riverbanks and, in doing so, reduce the mercury input into the South River by 90%.*

# Shiloh Baptist Church BMA Update

- Submitted 100% design to VDEQ (11/30/18)
- Permitting Review Complete
- Received Cultural Resources Approval
- 3 of 5 Access Agreements in Hand
- Mid-January start



# Construction Near Shiloh Baptist Church Begins Mid-January



DuPont began remediating mercury contamination along the South River in 2016. Since then, four areas have been remediated and restored (see map to left). In mid-November, remediation work will begin on about 1,000 feet along Riverside Drive. As a result, this road will be fenced off for the duration of the project (see map on reverse), which is expected to last 10 months. When complete, work will begin behind Shiloh Baptist Church. A staging area across the street from the church will be used to store materials and construction equipment. All activities will be conducted Monday through Friday between 7 A.M. and 5 P.M.

As part of these efforts, the Greenway will be extended from the railroad bridge behind the church and will merge with Riverside Drive (see artist renderings below). Consequently, the Abbe Place access to the Greenway trail will be closed when work is being conducted behind the church. This work is expected to begin in the Summer 2019.

*See the attached flyer for more information about what to expect during construction.*



# The Details...



This map shows the construction areas and road closures during the project. For more information, contact Mike Liberati, DuPont Corporate Remediation Group, at [Michael.R.Liberati@dupont.com](mailto:Michael.R.Liberati@dupont.com) or at (302) 598-9936.



**Thank You**

**AECOM**