

Pre-Remedy Monitoring Update

Former DuPont Waynesboro Site, Virginia

Area of Concern (AOC) 4

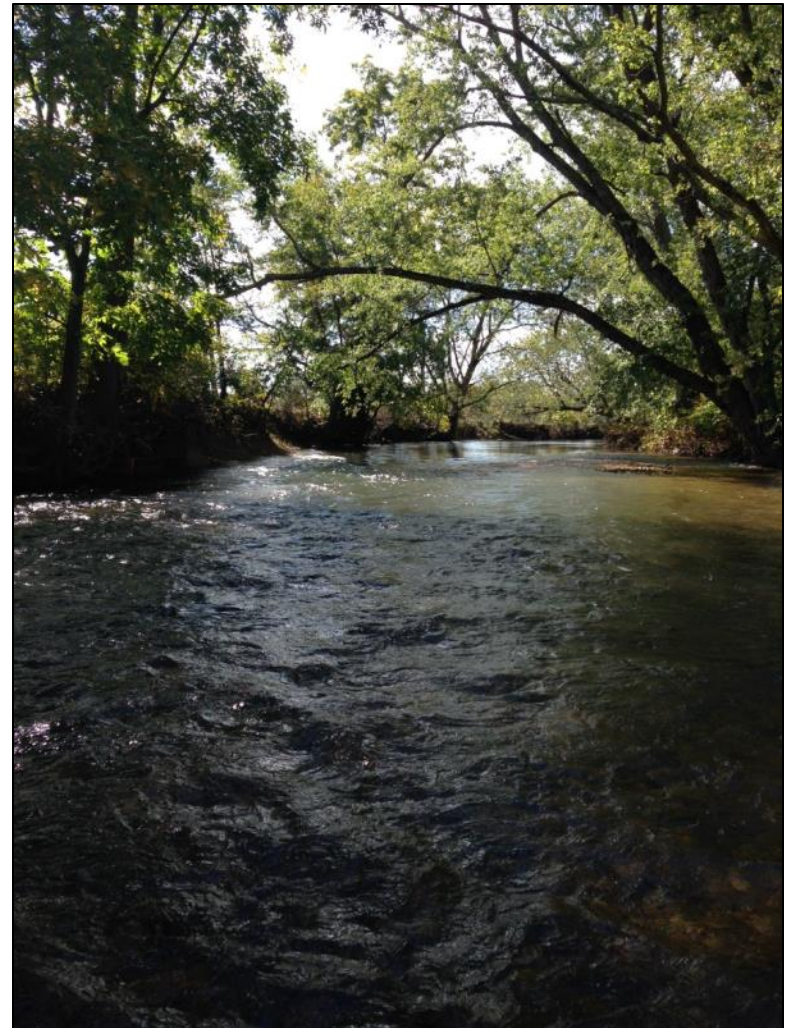


April 5, 2016

AECOM

Agenda

- Objectives
- Long-term Monitoring (LTM)
 - Carolina Wren
 - Mallard Sampling Update
- Short-term Monitoring (STM)
- Spring Monitoring Schedule
- Summary



Monitoring Program Objectives

– LTM

- Assess remedy efficacy addressing migration and potential exposure pathways
- Measure changes over a longer timeframe (i.e., ten+ years)
- Larger spatial scale – South River, SFS and Shenandoah rivers (~ 160 river miles)

– STM

- Document potential improvements attributable to IRM
- Measure improvements over a relatively short timeframe (i.e., two to ten years)
- Small spatial scale (i.e., adjacent to a particular BMA)

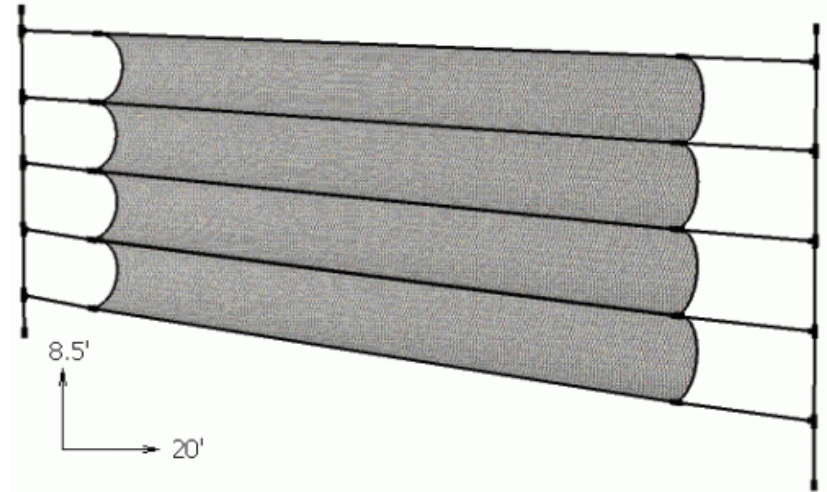
LTM- Carolina Wren

– Objective

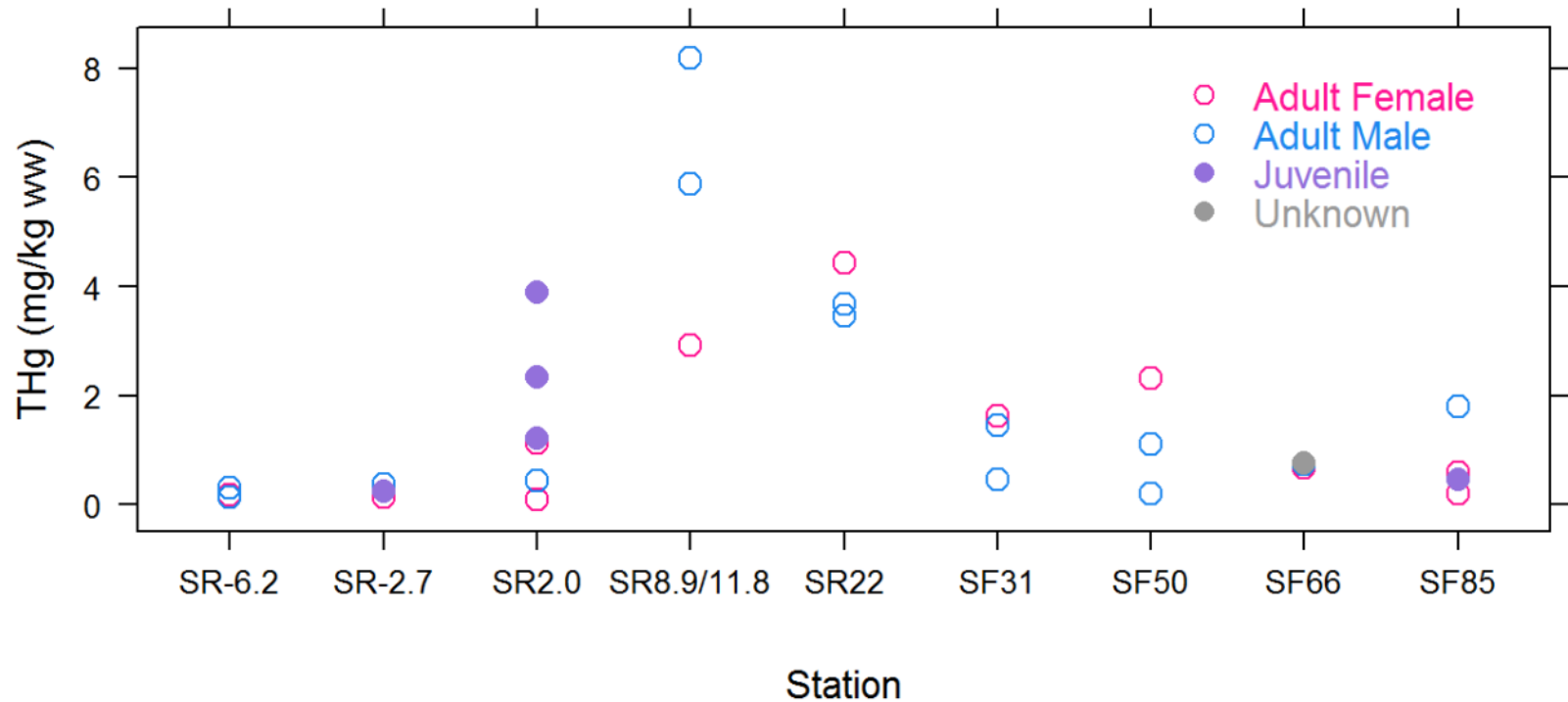
- Assessment of potential terrestrial ecological exposure to passerine birds

– Approach

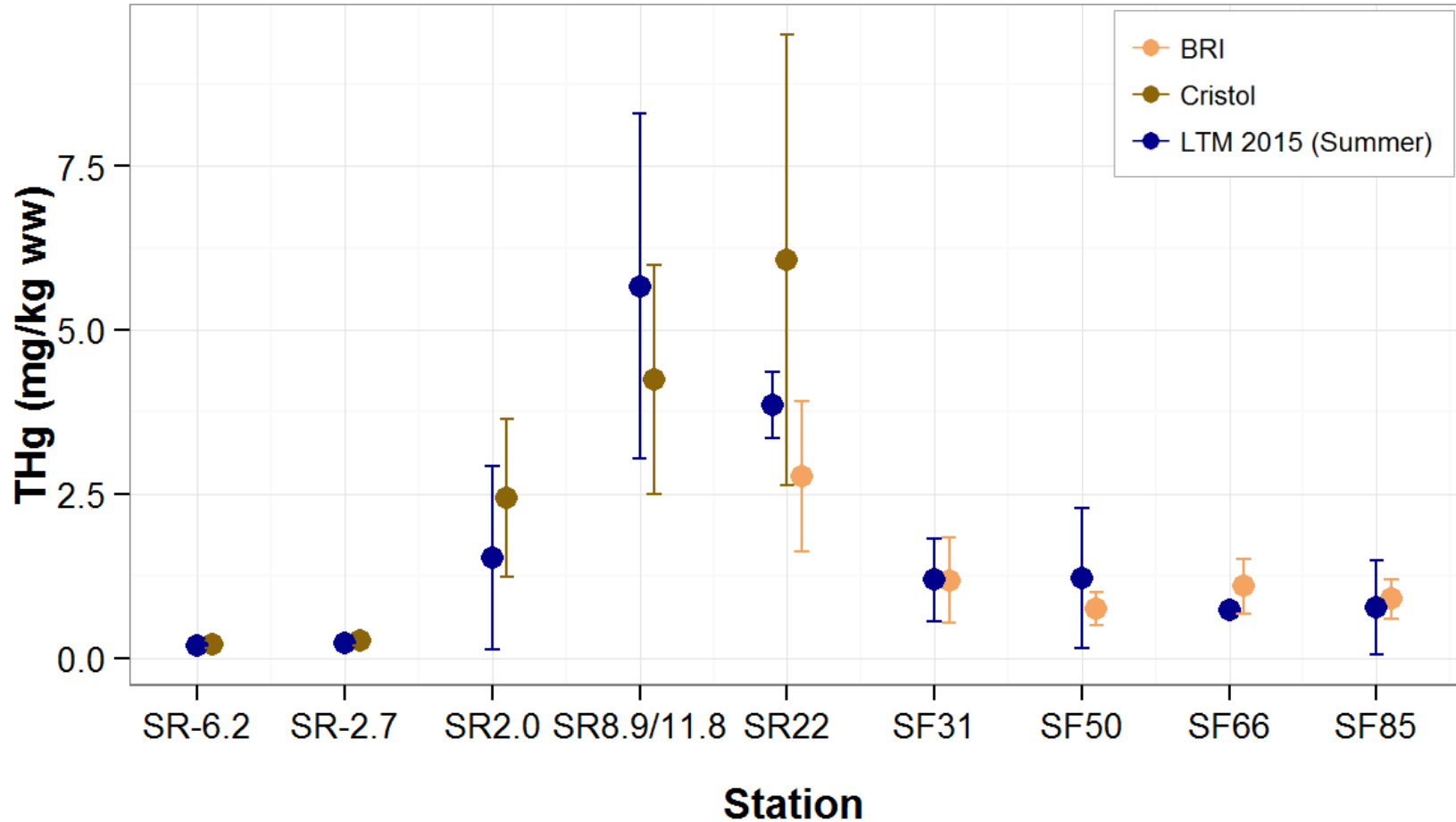
- July 2015
- 9 locations (2 background, 7 study)
- Mist nets used to capture juveniles and adult wrens
- Blood drawn from brachial vein
- THg analysis only (EPA 1631)



LTM- Carolina Wren-2015 (THg in blood)



LTM- Adult Carolina Wren (THg in blood)



LTM- Mallard Ducks

- Objective
 - Assessment of potential human exposure

- Approach
 - March 2016
 - 13 locations (1 background, 12 study)
 - Breast tissue analyzed for THg and MeHg (EPA 1631/1630)

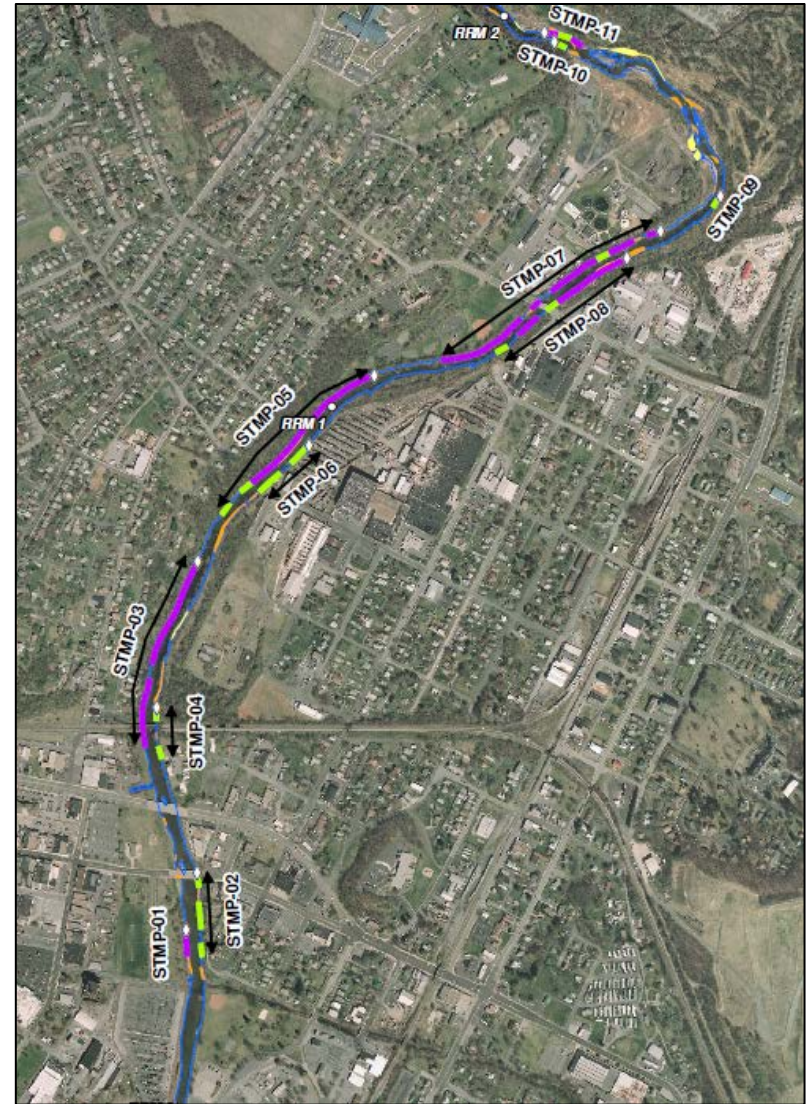
- Results
 - 26 mallards sampled from nine stations
 - Downstream of Foster's Landing- Poor habitat- very low mallard abundance observed
 - Data pending



Photo: USFWS; <http://www.werc.usgs.gov/>

Short-term Monitoring

- No new data collection activities
- 2015 Annual report
- 2016 stations
 - TBD pending design/construction schedule



Spring 2016 Schedule

- April : Clam deployment (LTM/STM)
- May: Adult Fish, Aquatic Eco and STM
- June: Terrestrial Eco and Snapping turtles



Summary

- Spring 2016 sampling events are final “Baseline” period
- Continued collaboration with VDGIF fish health sampling program
- Reporting Schedule
 - STM - Annual
 - LTM - Every 3 years





Thank You

Joshua.Collins@aecom.com



April 5, 2016

AECOM