



Remedial Design and Stakeholder Engagement, South River Remedy

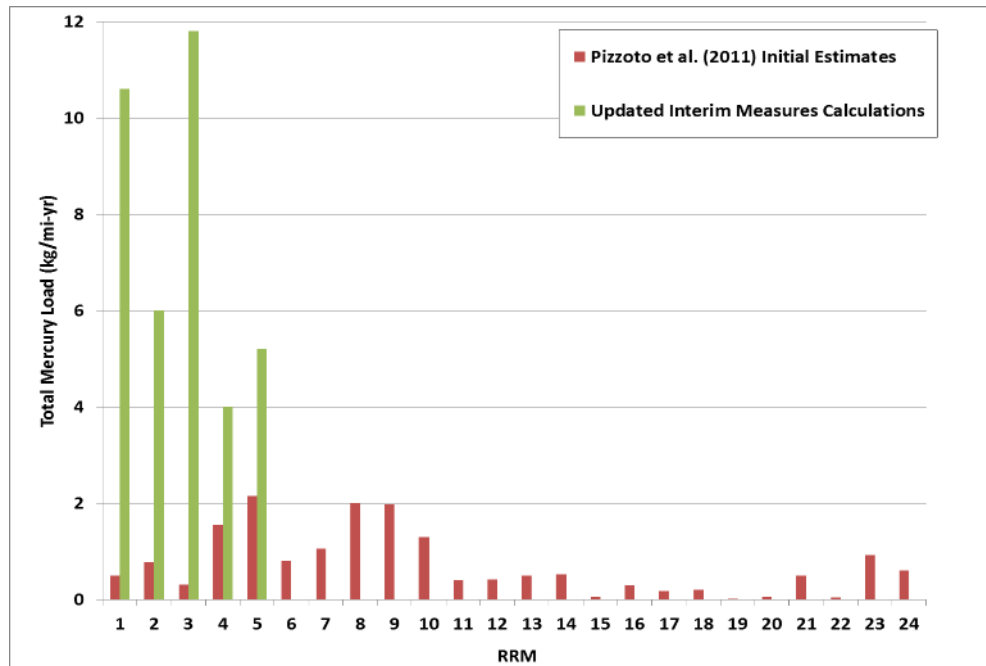
Clay Patmont

October 2015

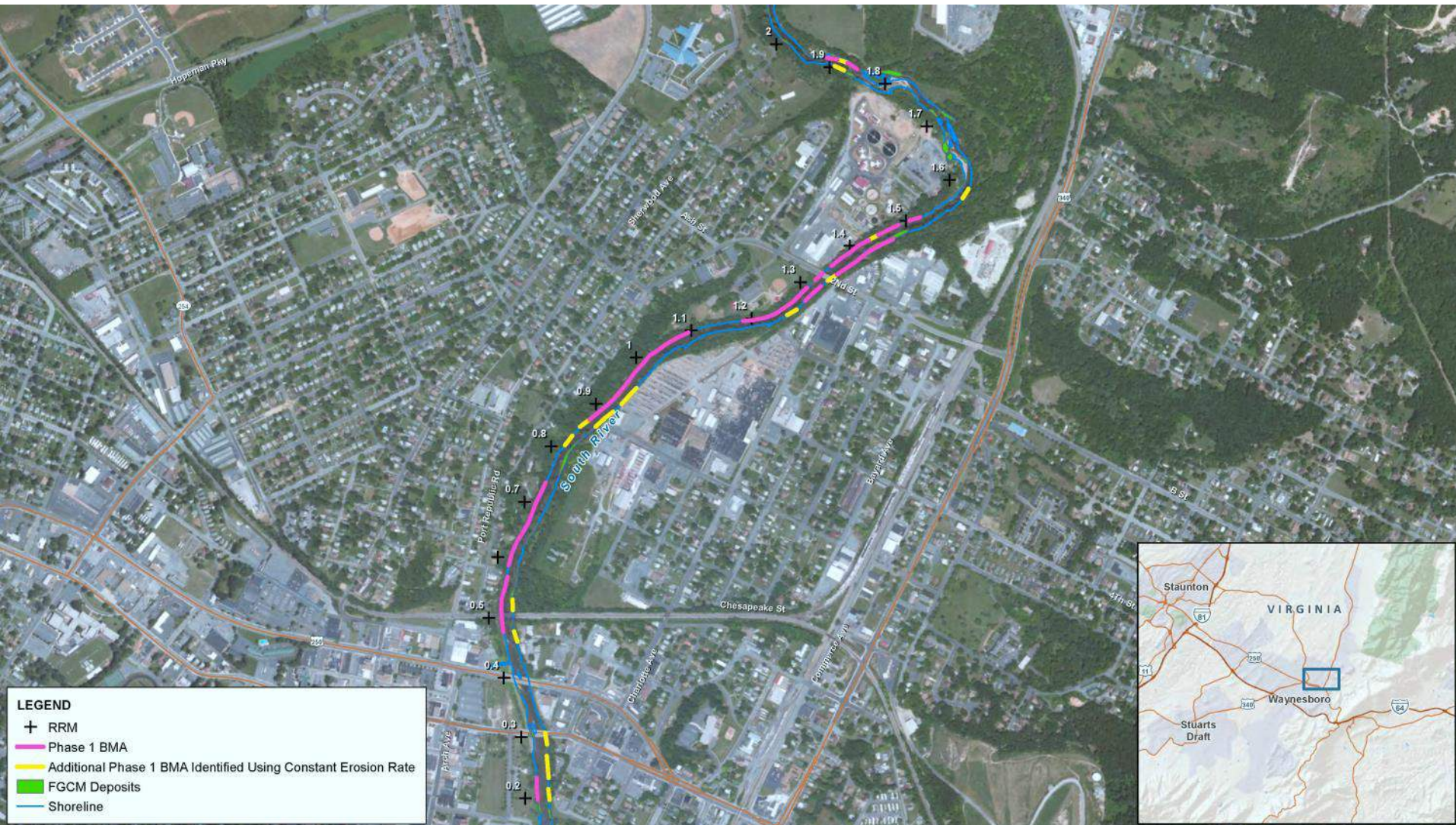


Three Overarching South River Remedy Objectives

1. Reduce mercury loading
2. Improve habitat
3. Minimize disruption

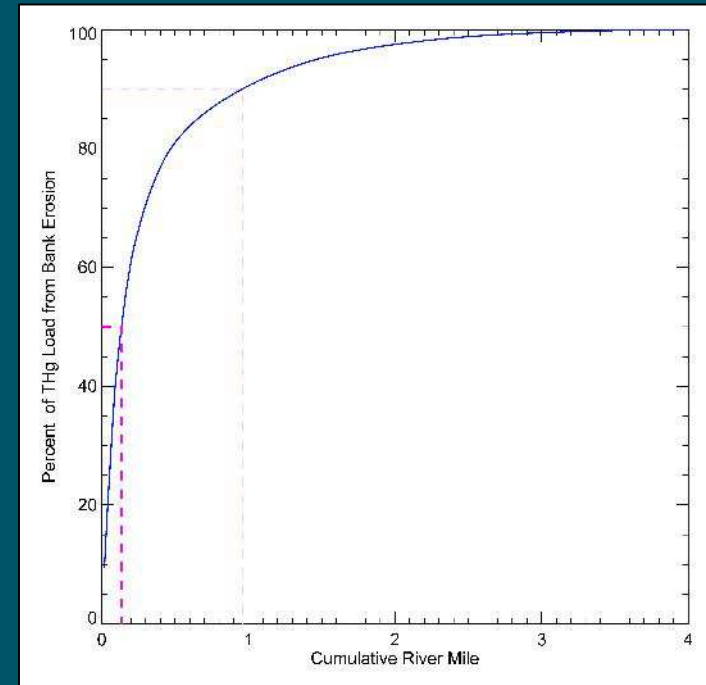


Initial Bank Management Areas (BMAs) - 2014



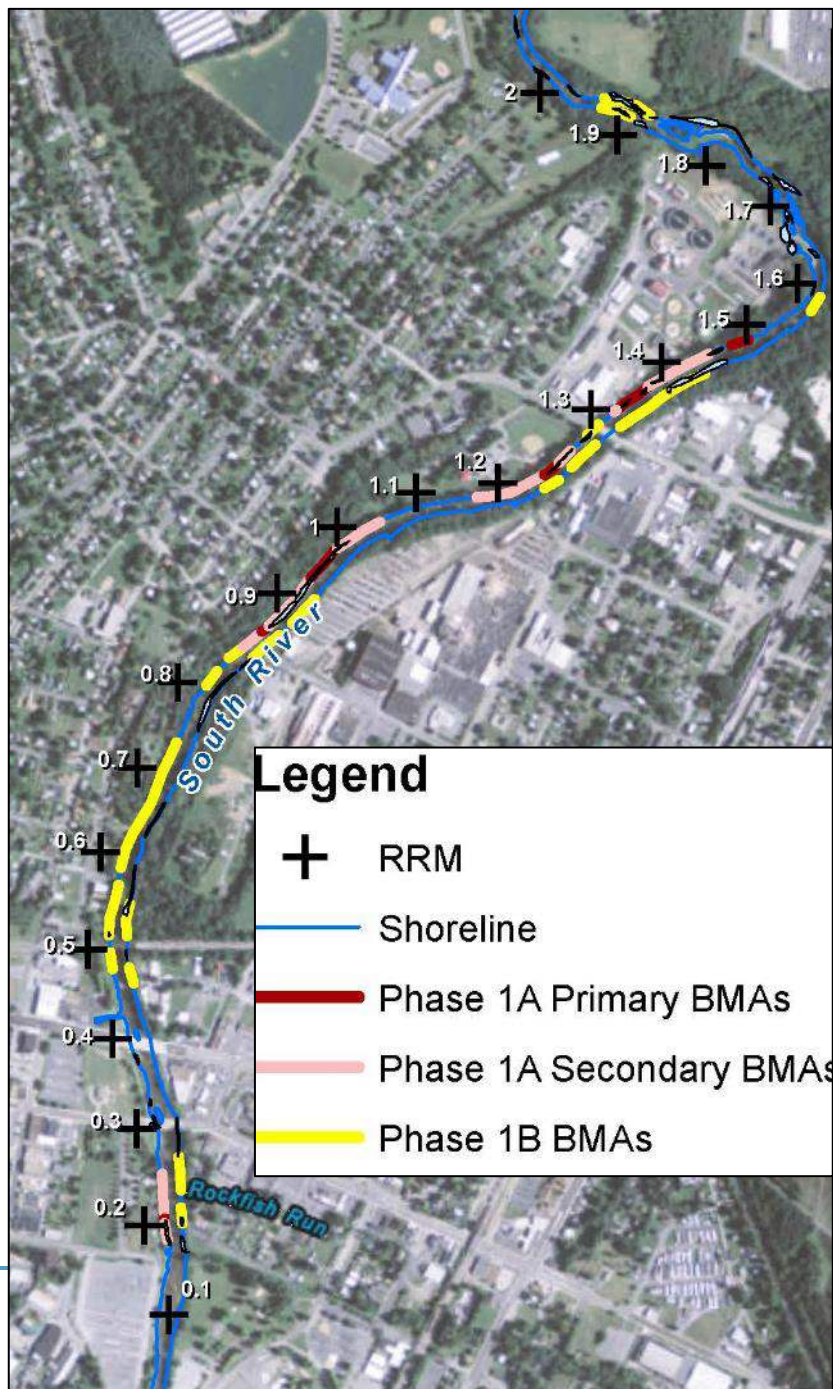
Updated Mercury Loading from BMAs – 2015

- More detailed loading analyses
- BMA definitions:
 - **Primary** BMAs (contribute 50% of cumulative T-Hg bank load)
 - Approximately 5% of bank length
 - **Secondary** BMAs (contribute an additional 40% of T-Hg bank load)
 - An additional 20% of bank length
- Phase 1: RRM 0 to 2
 - Phase 1A: most City-owned BMAs
 - Facilitates stakeholder input



Phase 1A Bank Management Areas (RRM 0 to 2)

- Localized Primary BMAs
 - Constitution Park (1 area)
 - North Park (3 areas)
 - Wastewater Plant (2 areas)
- Broader Secondary BMAs
- Different habitat conditions in BMAs
 - Assessed with stakeholders using detailed surveys



Bank Remedy Concepts

- Mercury remediation remedies
 - Removal and disposal
 - Structural stabilization
 - Enhanced vegetative stabilization
- Habitat remedies
 - Enhancement
 - Avoidance
 - Replacement
- Location-specific preliminary designs developed with stakeholder engagement



LEGEND:

- BATHYMETRY SURVEY EXTENTS
- GREENWAY TRAIL
- SHEET EXTENTS

NOTES:

- AERIAL BY BING MAPS.

PROPOSED STAGING AREA

EC-1/R-1

EC-2/R-2

EC-3/R-3

EC-4/R-4

EC-5/R-5

EC-6/R-6

SOUTH RIVER

Delphine Ave

E Main St

S Charlotte Ave

S Bath Ave

Dupont Blvd

S Bayard Ave

N Bath Ave

N Augusta Ave

N Commerce Ave

N Bayard Ave

N Winchester Ave

Shiloh Ave

Appalachian Mountains

Highland Ave

Fairview Ave

Grayson Ave

Essex Ave

Bridge Ave

Highland Ave

Grayson Ave

Essex Ave

Fairfax Ave

N Bayard Ave

N Commerce Ave

N Winchester Ave

Woodland Circle

Winchester Rd

Elkin Ave

6th St

7th St

8th St

9th St

10th St

11th St

12th St

13th St

14th St

15th St

16th St

17th St

18th St

19th St

20th St

21st St

22nd St

23rd St

24th St

25th St

26th St

27th St

28th St

29th St

30th St

31st St

32nd St

33rd St

34th St

35th St

36th St

37th St

38th St

39th St

40th St

41st St

42nd St

43rd St

44th St

45th St

46th St

47th St

48th St

49th St

50th St

51st St

52nd St

53rd St

54th St

55th St

56th St

57th St

58th St

59th St

60th St

61st St

62nd St

63rd St

64th St

65th St

66th St

67th St

68th St

69th St

70th St

71st St

72nd St

73rd St

74th St

75th St

76th St

77th St

78th St

79th St

80th St

81st St

82nd St

83rd St

84th St

85th St

86th St

87th St

88th St

89th St

90th St

91st St

92nd St

93rd St

94th St

95th St

96th St

97th St

98th St

99th St

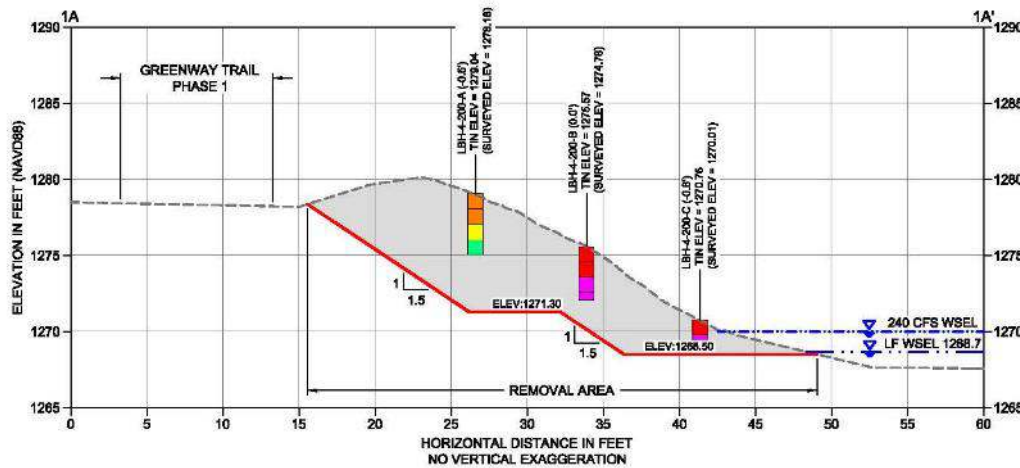
100th St

Constitution Park

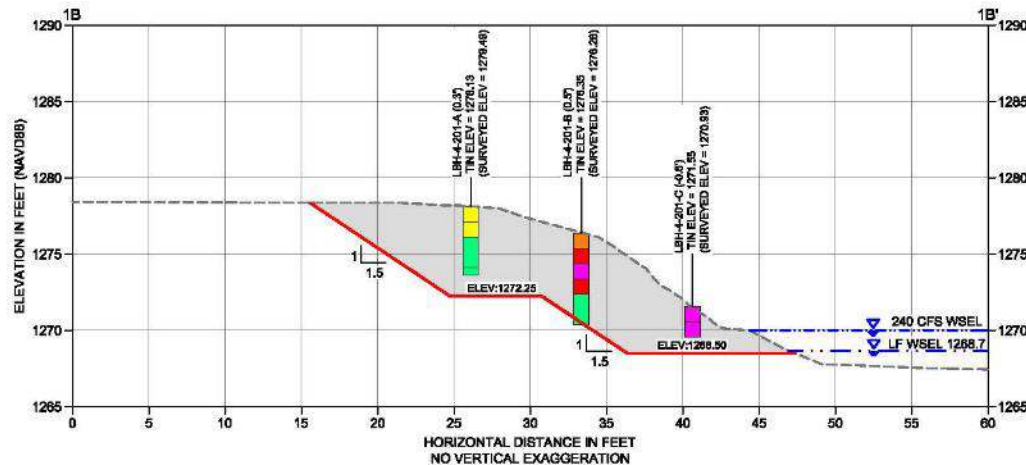
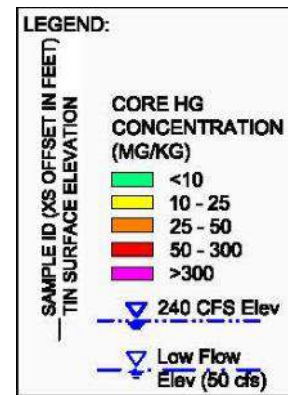


[illegible]

Constitution Park Primary BMA Removal Prism

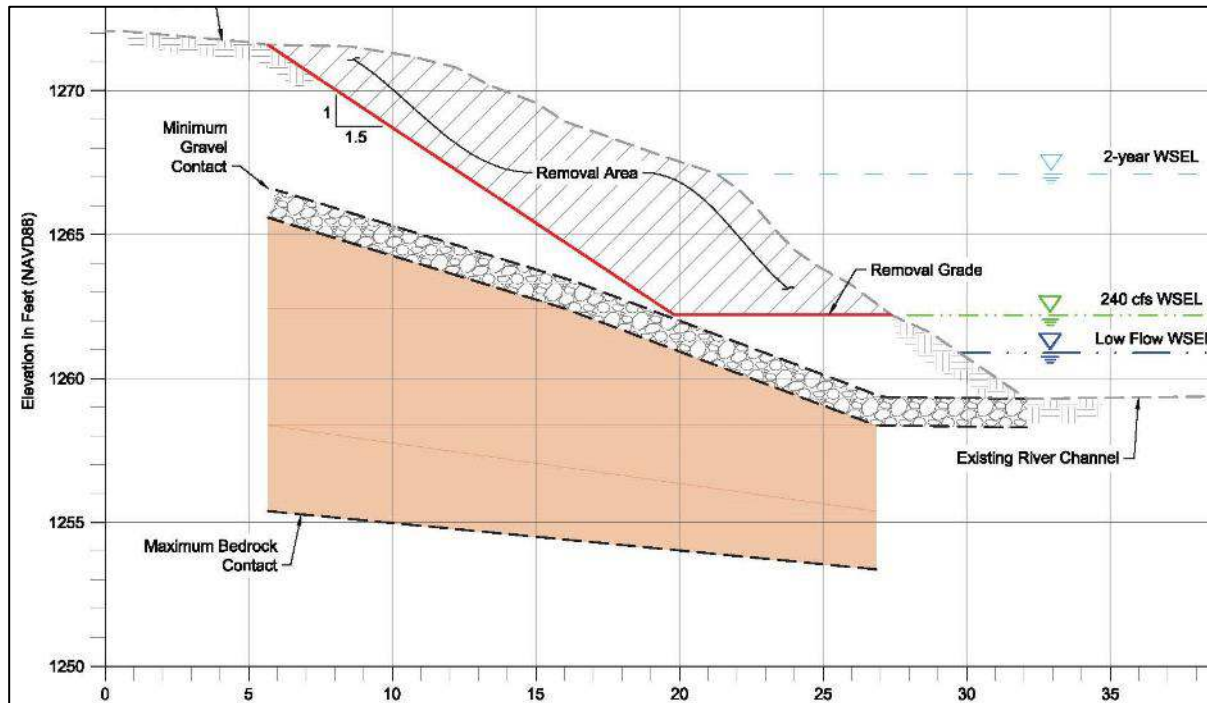


1A SECTION - CONSTITUTION PARK
C-1 SCALE: 1" = 5'



1B SECTION - CONSTITUTION PARK
C-1 SCALE: 1" = 5'

Typical Primary BMA Removal Section

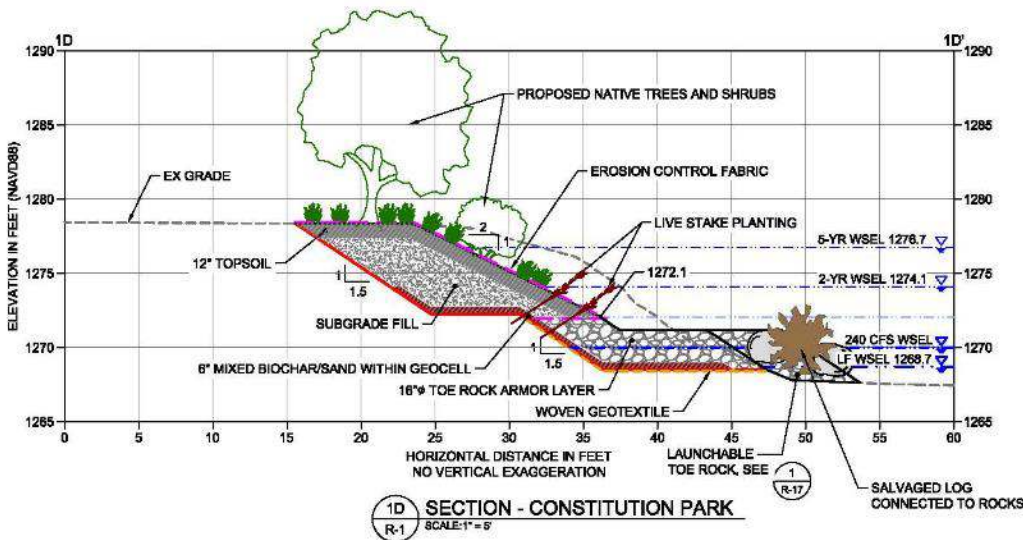
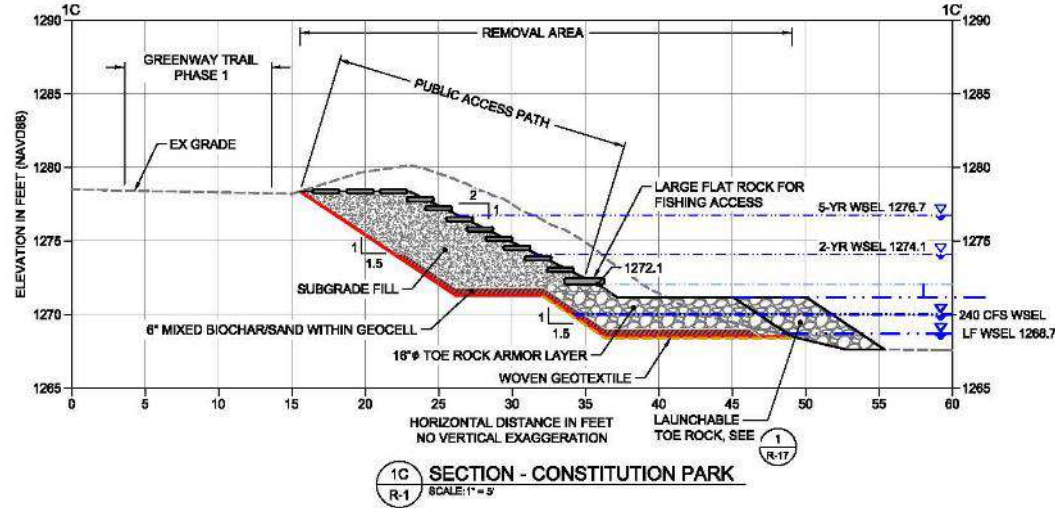


LEGEND:

	Existing Grade		Low Flow Water Surface Elevation
	Removal Grade		Removal Area
	2-year Water Surface Elevation		Typical Depth of Bedrock
	240 cfs Water Surface Elevation		Typical Depth of Basal Gravel/Sand

- Excavations unlikely to extend to bedrock in most Primary BMAs
- Opportunistic placement of biochar in lower bank, but above basal gravel

Constitution Park Primary BMA Restoration



- Integrate public access path
- Enhance existing low ecological value riparian and bank habitat

LEGEND:

- EXISTING GRADE
- POST REMOVAL SURFACE
- - - - - ROCK TOE UPPER LIMIT

SHORT ST

EX WATER LINE

EX WATER LINE (TO BE VERIFIED)

PROPERTY BOUNDARY APPROXIMATED FROM 1986 SURVEY AND WILL BE RESURVEYED BY A LICENSED SURVEYOR

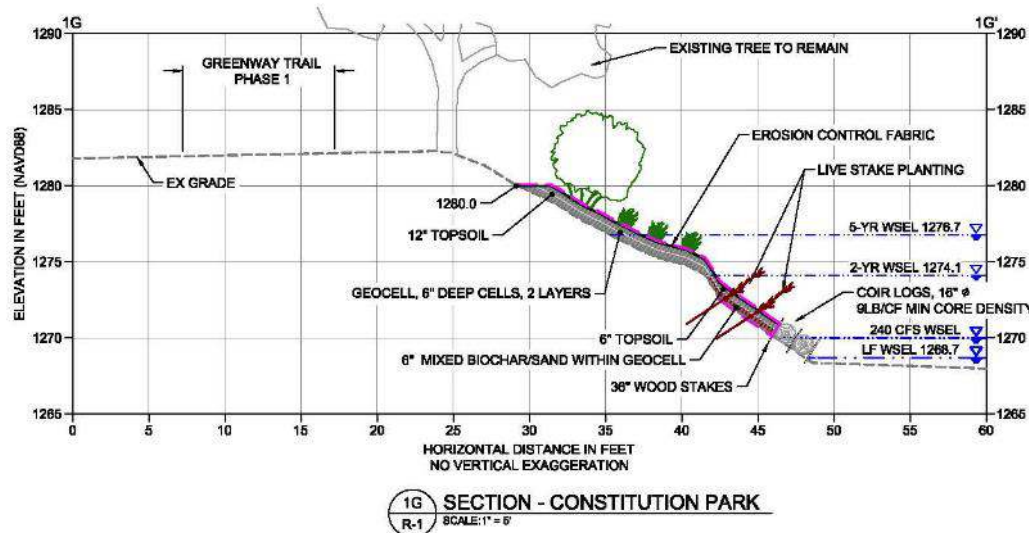
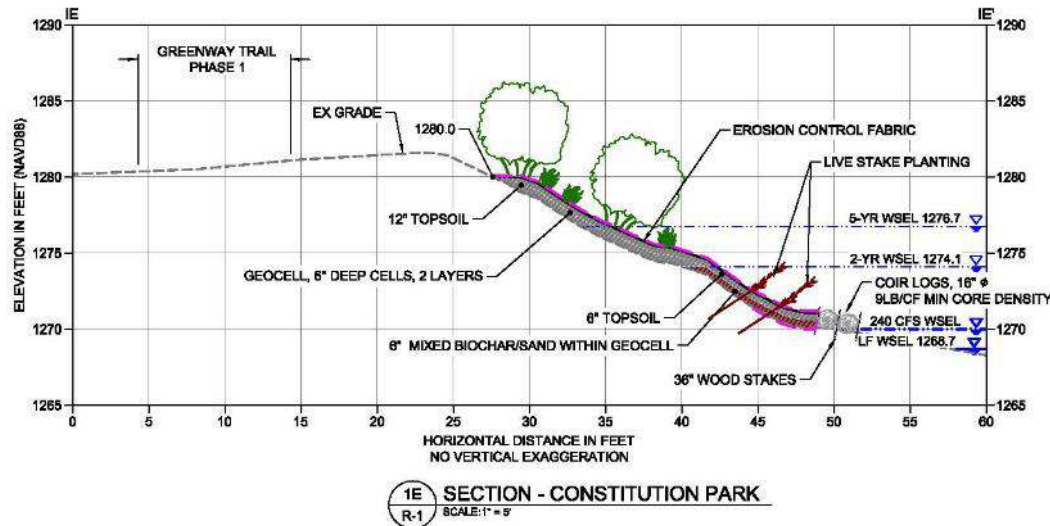
S. RIVER GREENWAY TRAIL, PHASE 1

EX GAS LINE

LEGEND

- 1250— EXISTING CONTOURS (1 FT INTERVAL)
- BATHYMETRY SURVEY EXTENTS
- PARCEL LINE
- BL12.0 EXISTING TREE TO REMAIN (SPECIES, DBH)
- +0.20 RELATIVE RIVER MILE
- GREENWAY TRAIL
- PROPOSED ACCESS ROAD
- TOE ROCK PLACEMENT
- RIPARIAN LIVE STAKING
- NATIVE UPLAND PLANTING
- PUBLIC ACCESS

Constitution Park Secondary BMA Restoration



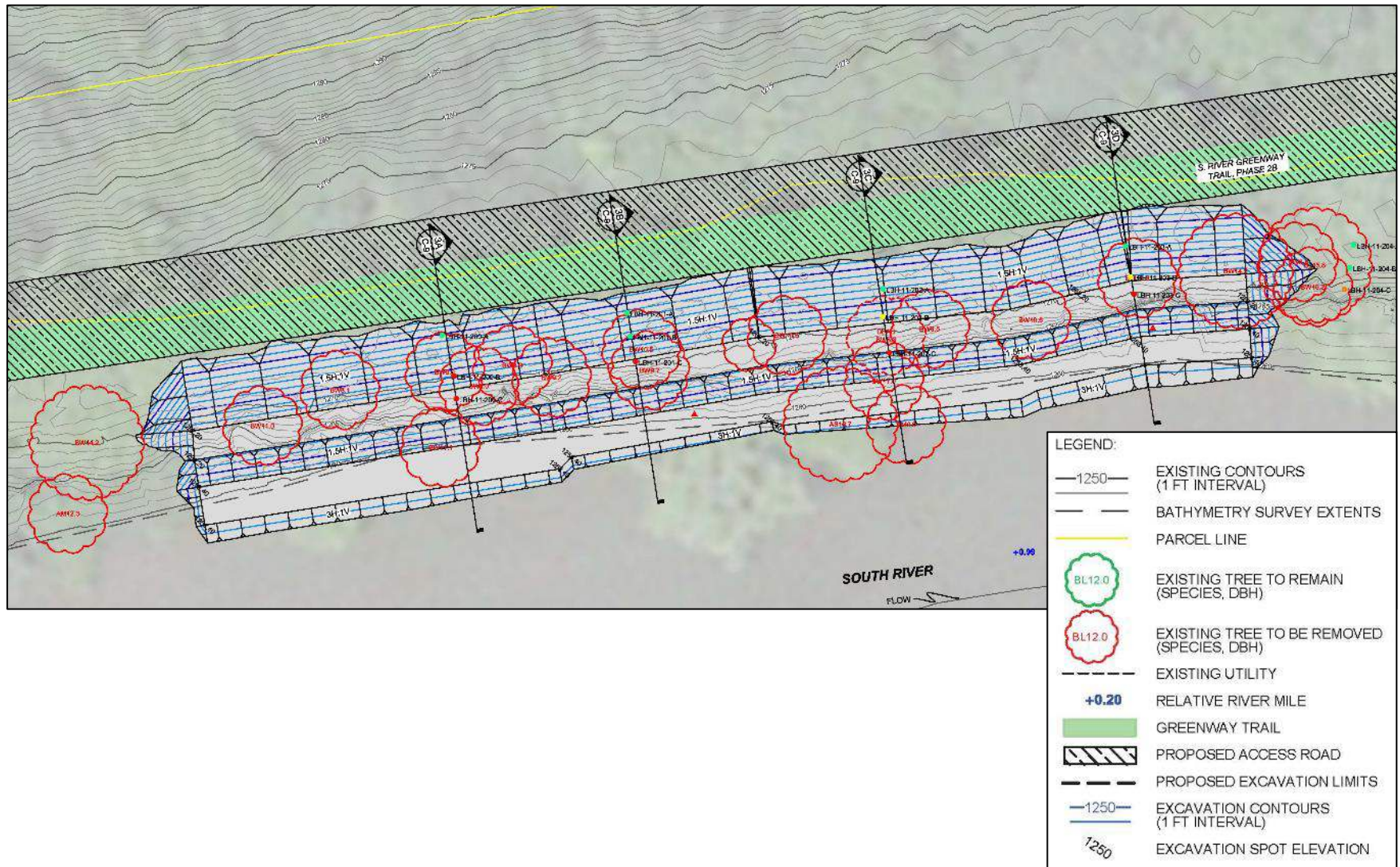
- Protect existing large trees
- Enhance existing low ecological value riparian and bank habitat



North Park B

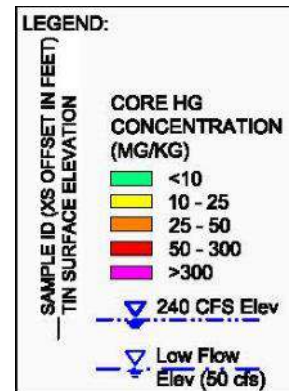
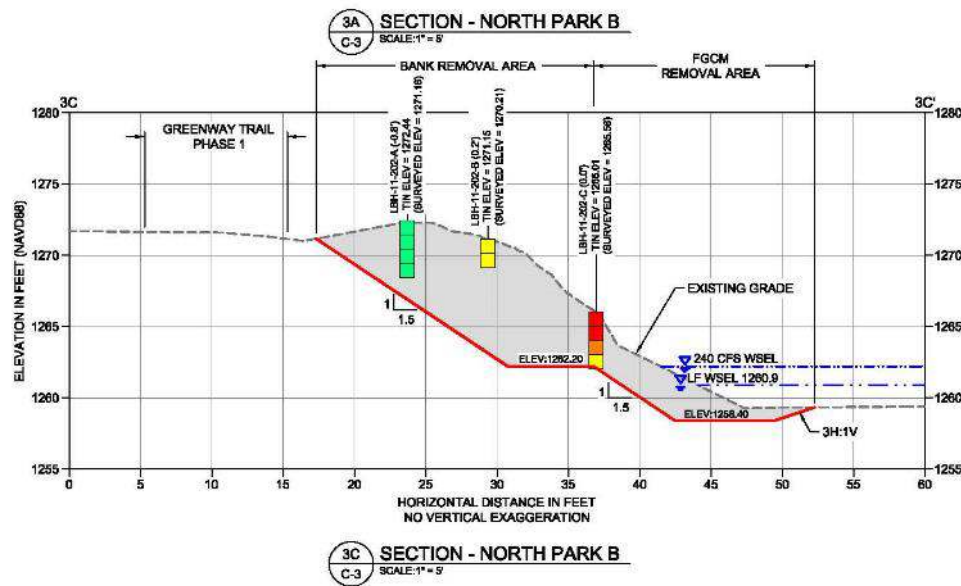
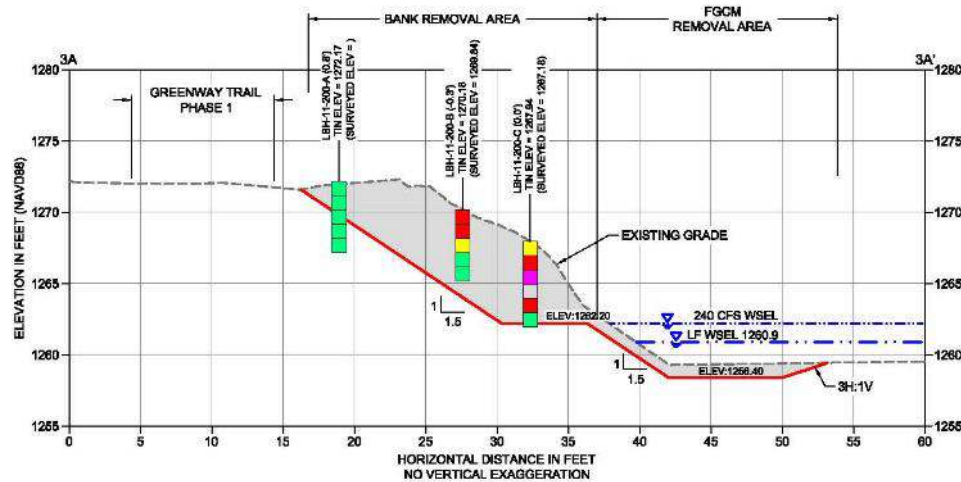


North Park B Primary BMA Preliminary Design

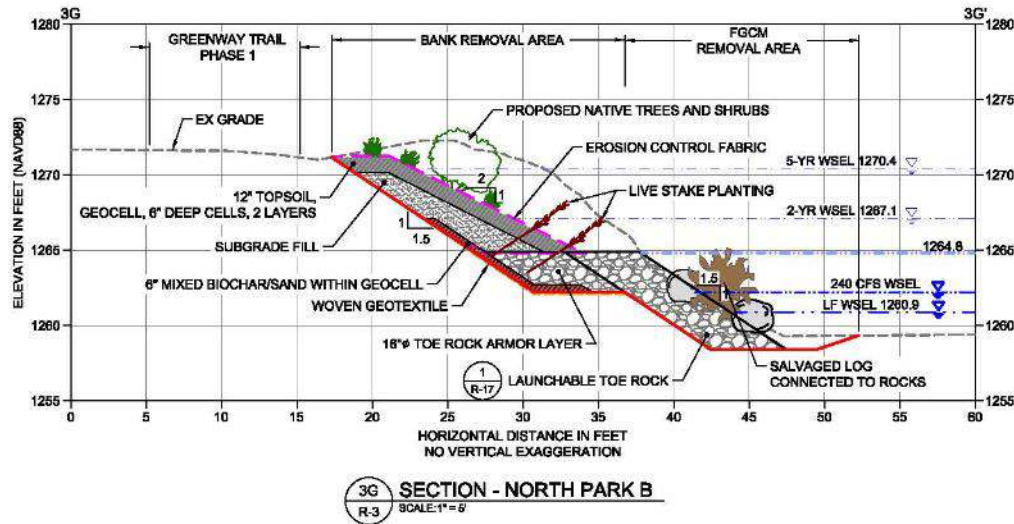
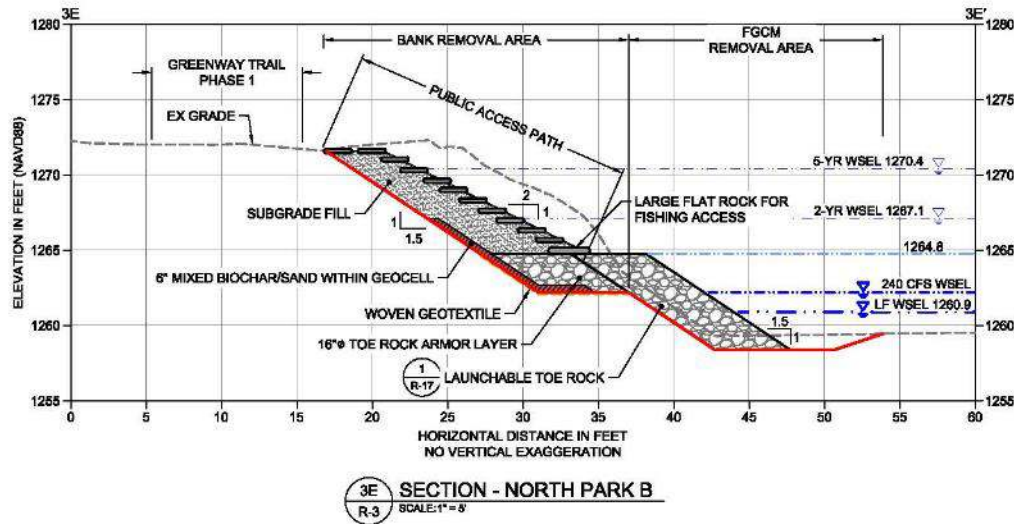


North Park B Primary BMA Removal Prism

- Includes removal of adjacent fine-grained channel margin deposit



North Park B Primary BMA Restoration

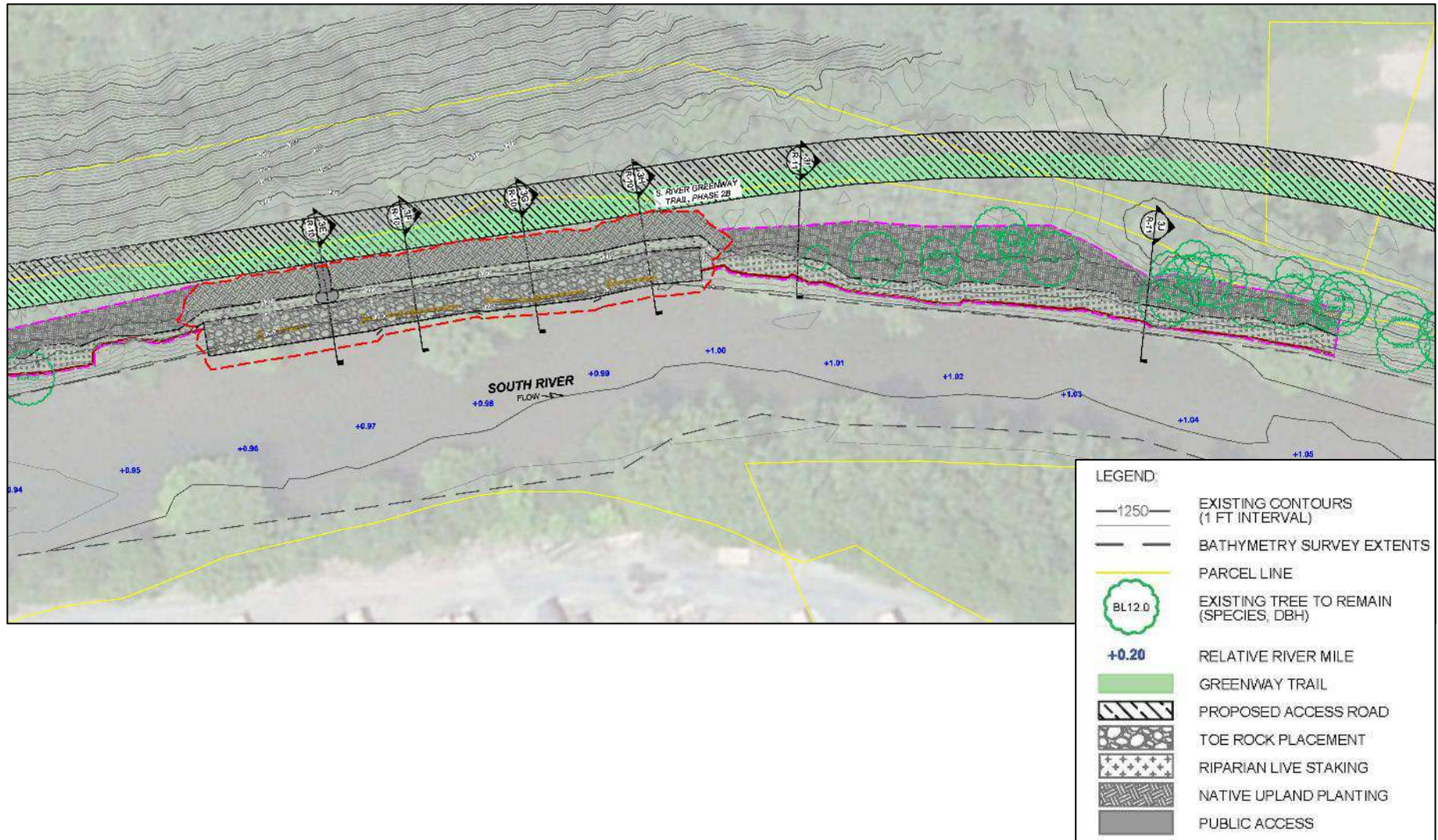


- Integrate public access path
- Enhance existing low ecological value riparian and bank habitat

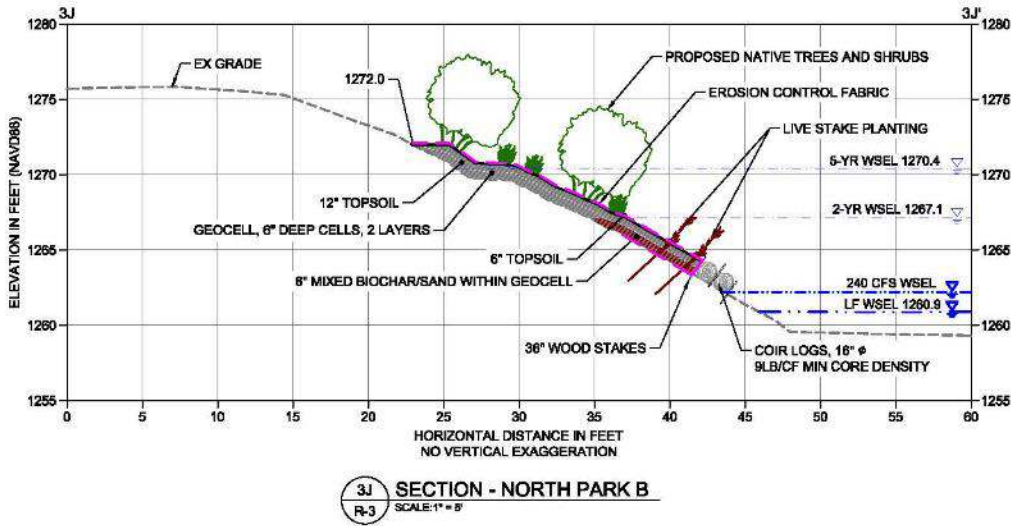
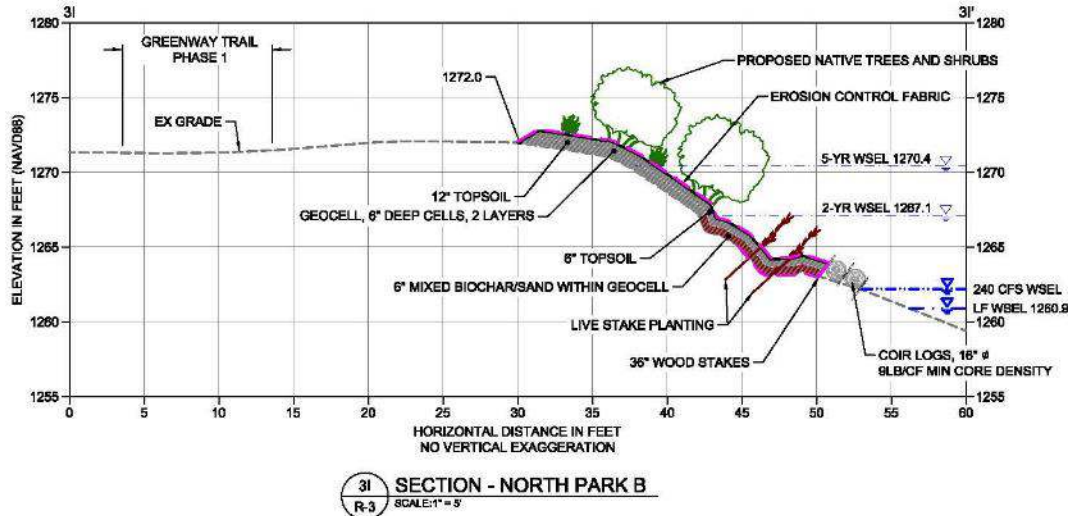
LEGEND:

- EXISTING GRADE
- POST REMOVAL SURFACE
- - - - - ROCK TOE UPPER LIMIT

North Park B Secondary BMA Prelim. Design



North Park B Secondary BMA Restoration



- Protect existing large trees
- Enhance existing low ecological value riparian and bank habitat



Schedule and Next Steps

- November – City and VADEQ review of draft Phase 1A preliminary design report
- December – Phase 1A permit applications
- Early 2016 – Phase 1A final design, access agreements, and permits
- Spring 2016 – begin Phase 1A construction

