

Corrective Action Program Update

Former DuPont Waynesboro Plant
April 10, 2013

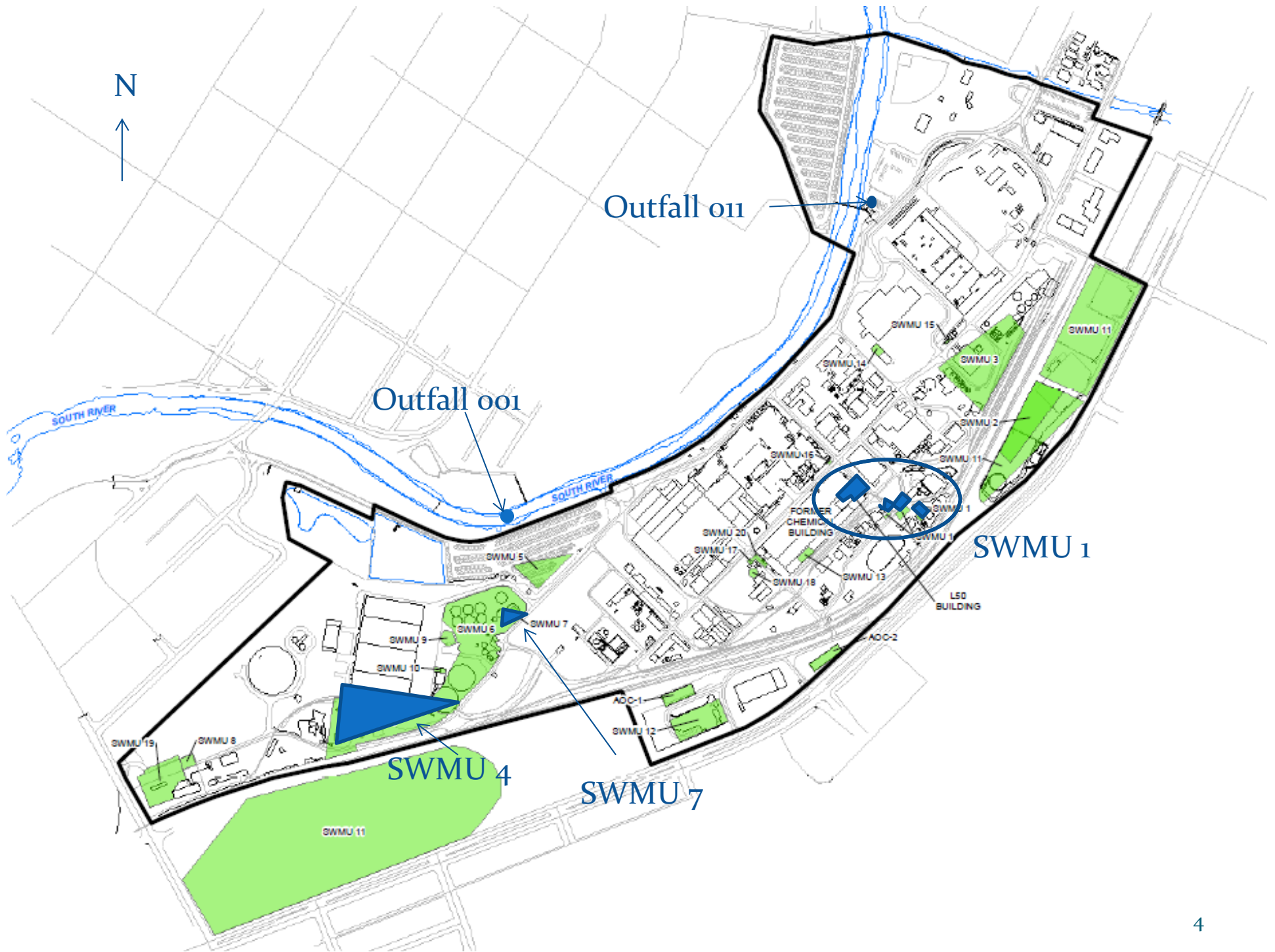


Introduction

- Background
- Actions Completed
- Current Activities
- Future Activities
- Schedule

Background

- RCRA Permit issued in 1998
- RFI began in 2001
 - SWMU Investigation – Hg source areas
 - Groundwater Monitoring and Outfall Monitoring Programs
 - Sewer Investigation
 - Interim Measures
- RFI Findings
 - Hg found predominantly at two areas (SWMU's 1 and 4)
 - Storm sewer impacts from sources– outfall discharges
 - Groundwater impacts are local to on-site wells
 - NE area groundwater contained by pumping
 - Groundwater discharge to river is below Hg standard





Actions Completed

- Sewer Investigation – Fall 2010
 - Cleaned out 27 cy of sediment from sewer
 - Removed estimated 1,148 lb Hg
 - CCTV inspections





Actions Completed (cont.)

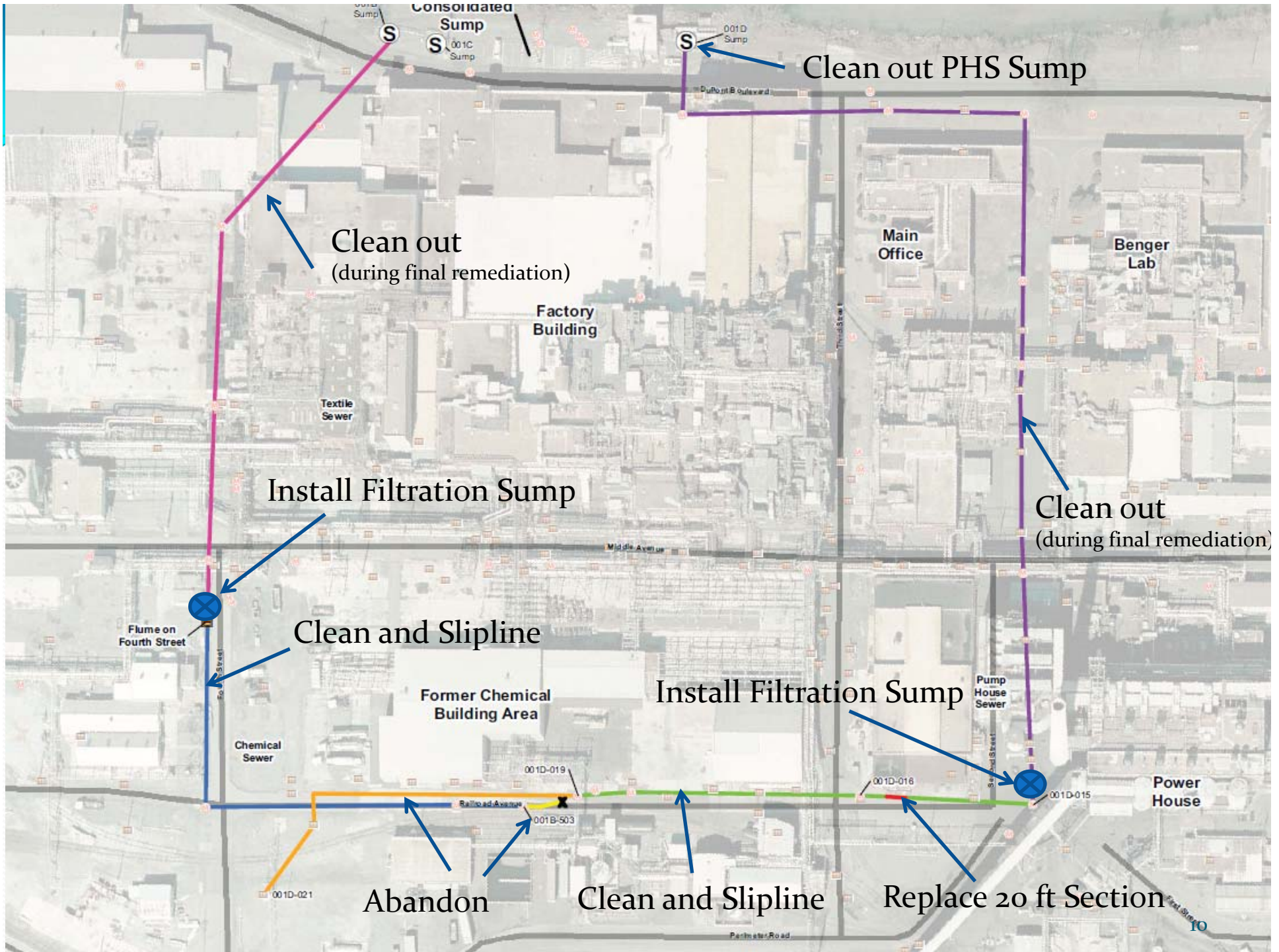
- Interim Measures – Fall 2010
 - Removed and abandoned Hg sources connected to sewers
 - Re-routed roof drainage that flushed through impacted trenches



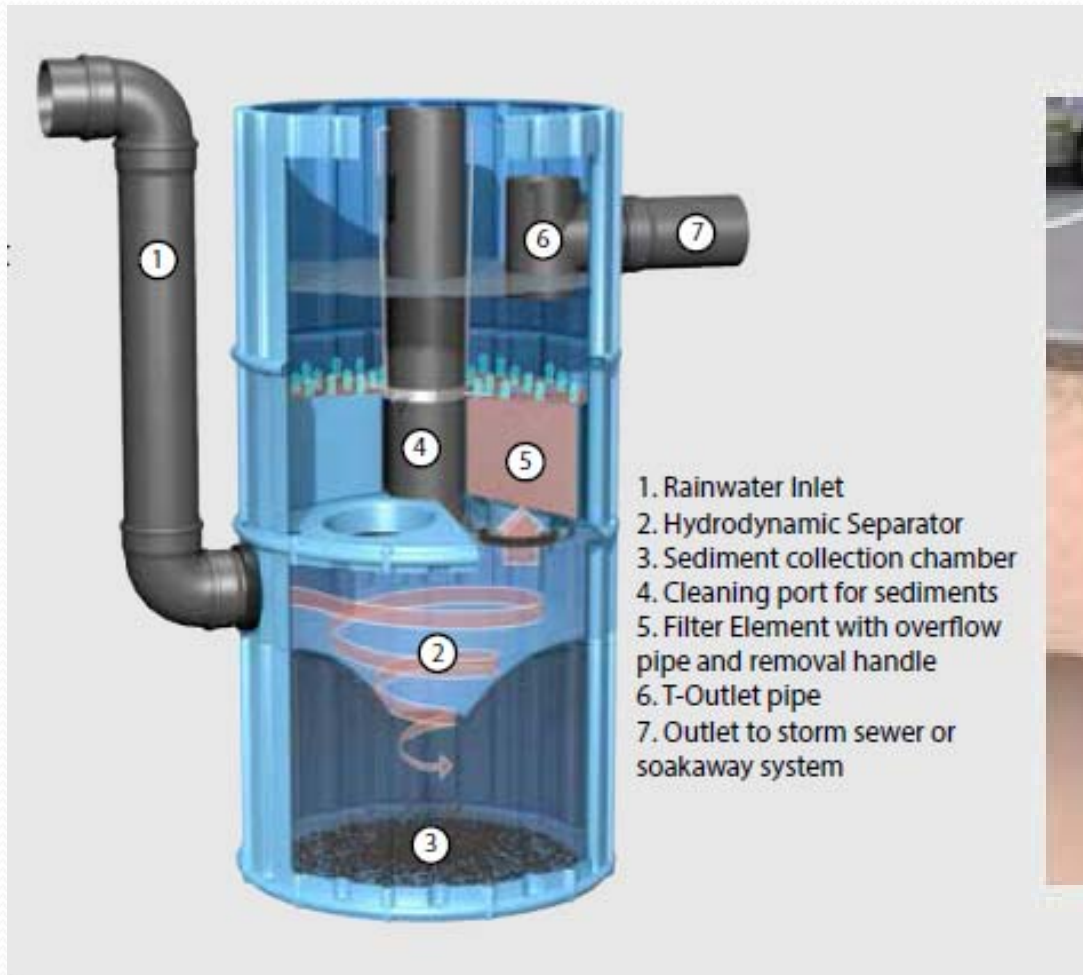


Current Activities

- Implement Railroad Ave. Interim Measures
 - Sewer Abandonments/Repairs
 - Cleaning, sliplining
 - Install filtration Sumps
 - Clean downstream PHS Sump



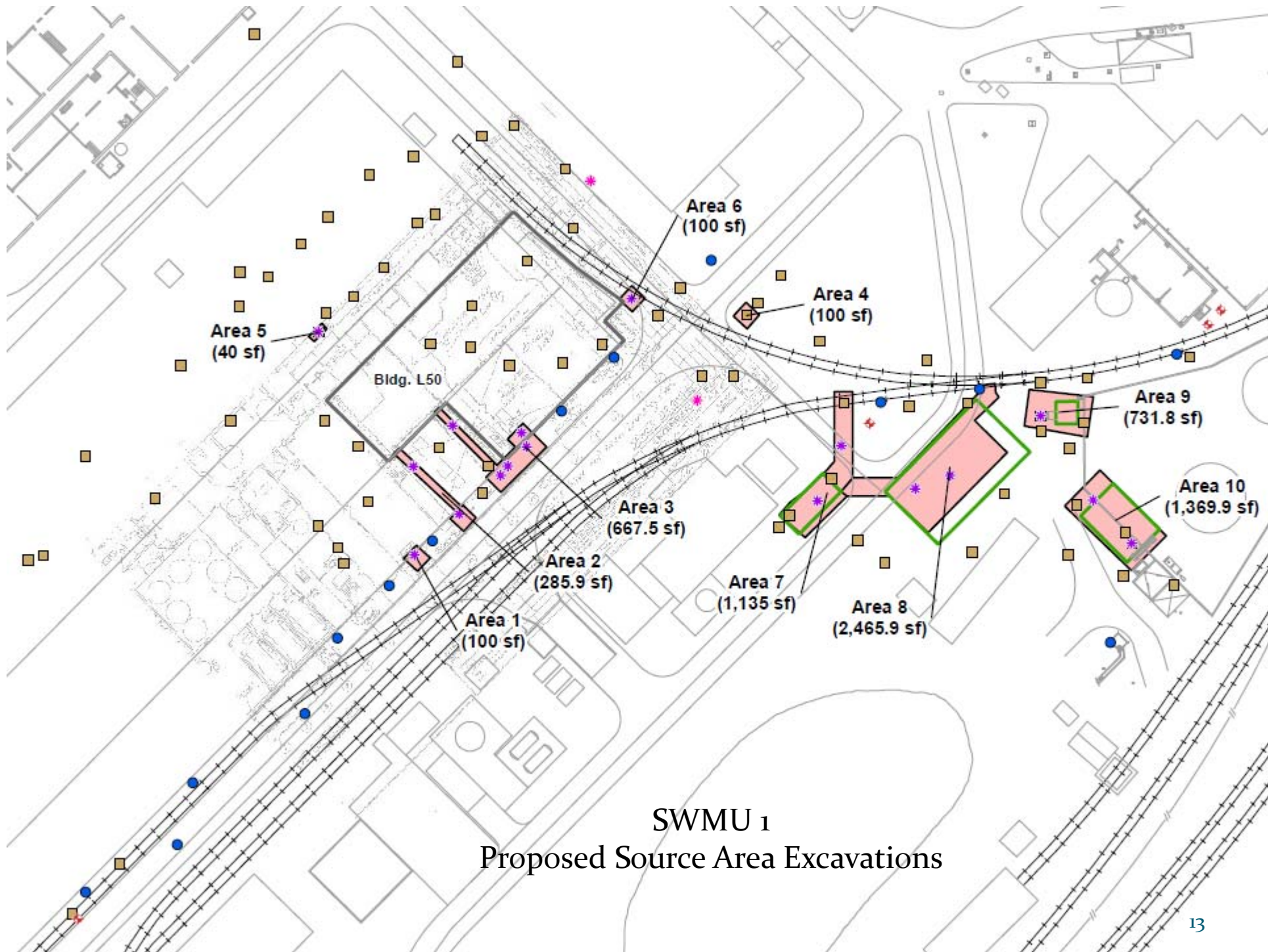
ecoStorm Filtration System



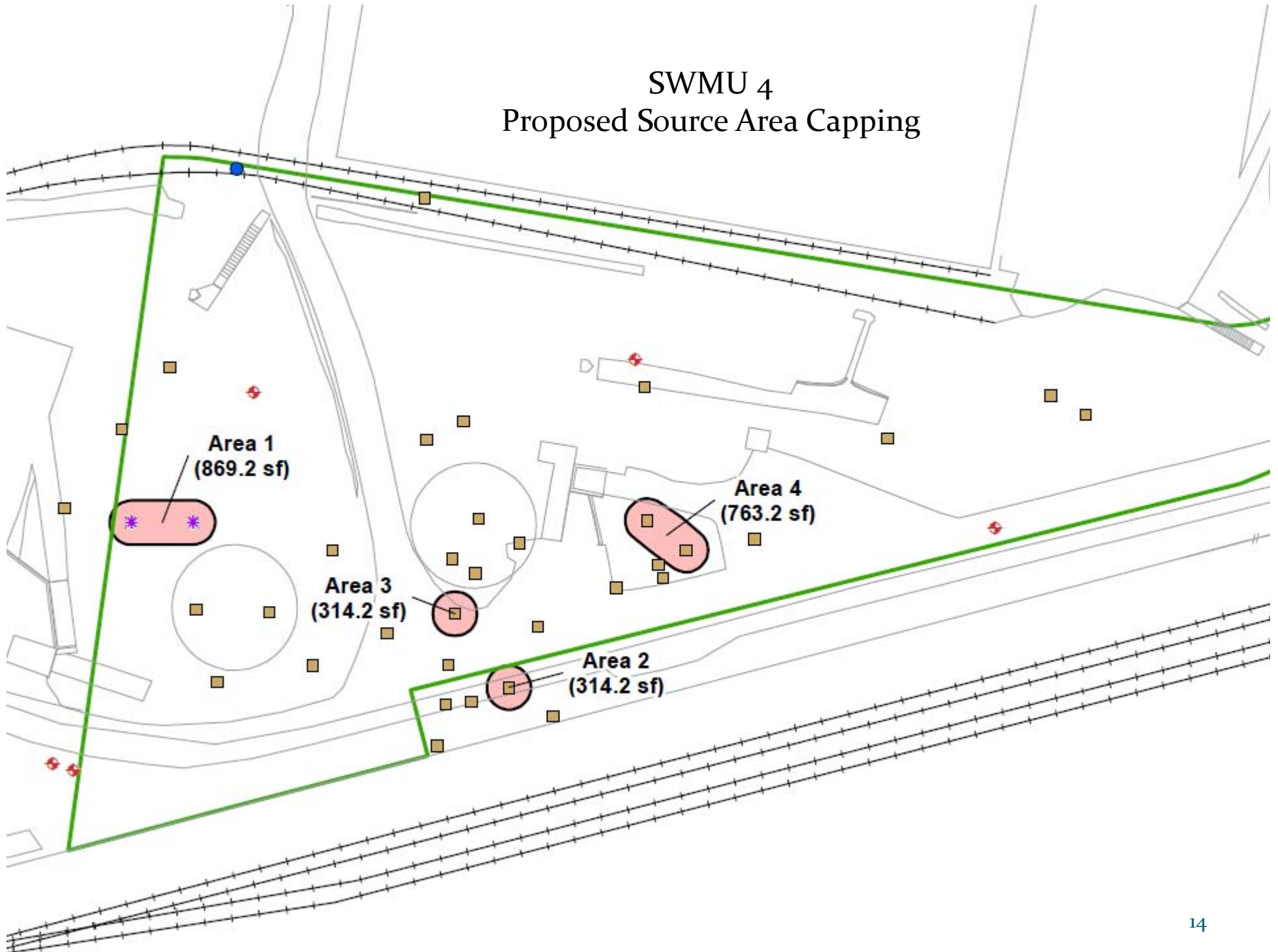


Future Activities

- Address source areas and GW in CMS
 - Source area removals in SWMU 1
 - Maintain pumping to control gradient at SWMU 1
 - Capping, hydraulic control at SWMU 4
 - Institutional controls for SWMU 7 groundwater



SWMU 4 Proposed Source Area Capping





Schedule

- Interim Measures: Summer 2013 – Spring 2014
- CMS Report: 4Q13
- Remedial Design: 2014
- Final Remediation: 2015