

Floodplain Survey

March 2002

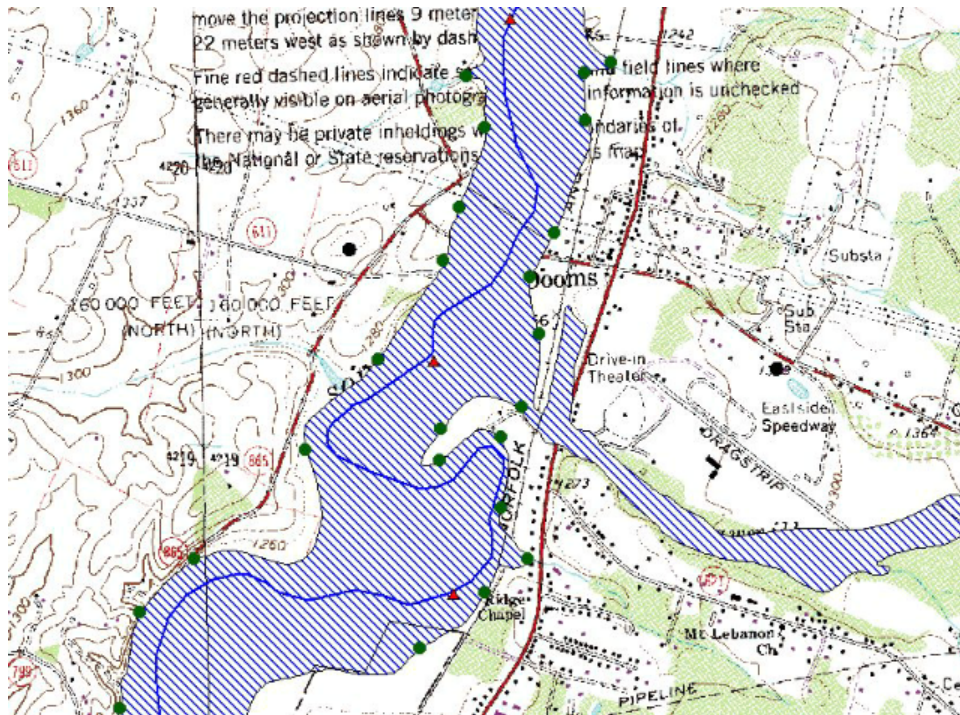
Annette Guiseppi-Elie, Dick Jensen

Purposes of Survey

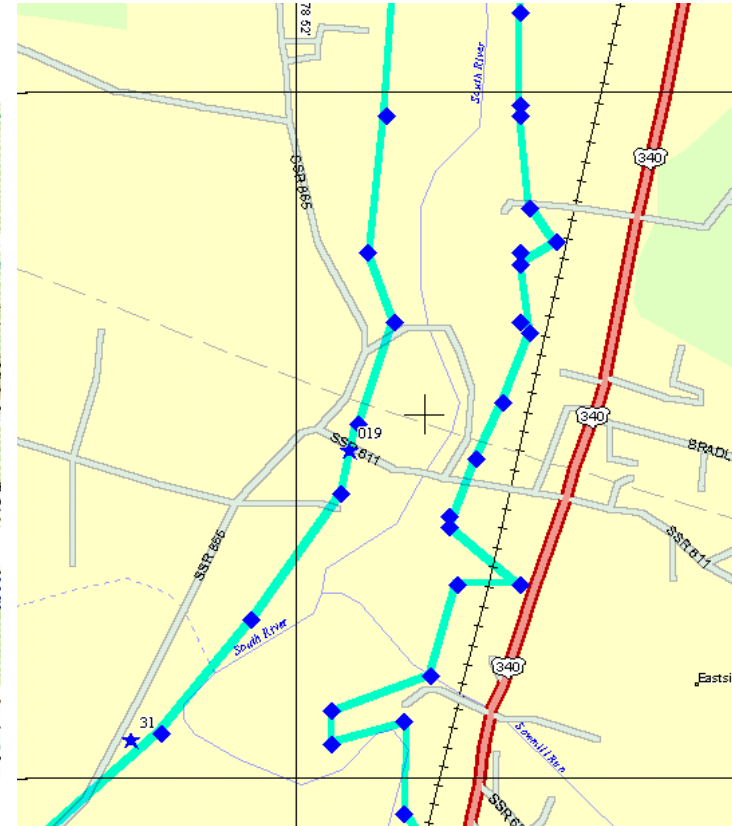
- Groundproofing - checking the maps
 - View/record residential floodplain areas
 - Play areas, private gardens, parklands
 - Limited survey of rural areas: homes, fields
-
- Walk the drainage from old landfill to river
 - Visit/check out the Forestry Station

Survey Method

Help from Adam Bachman, URS

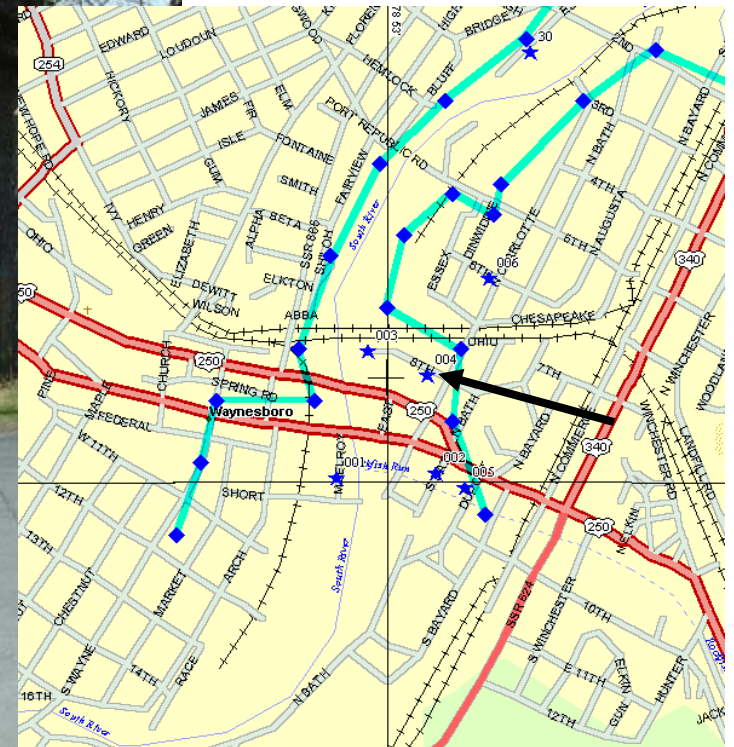


Points transferred from GIS to



GPS Roadmap

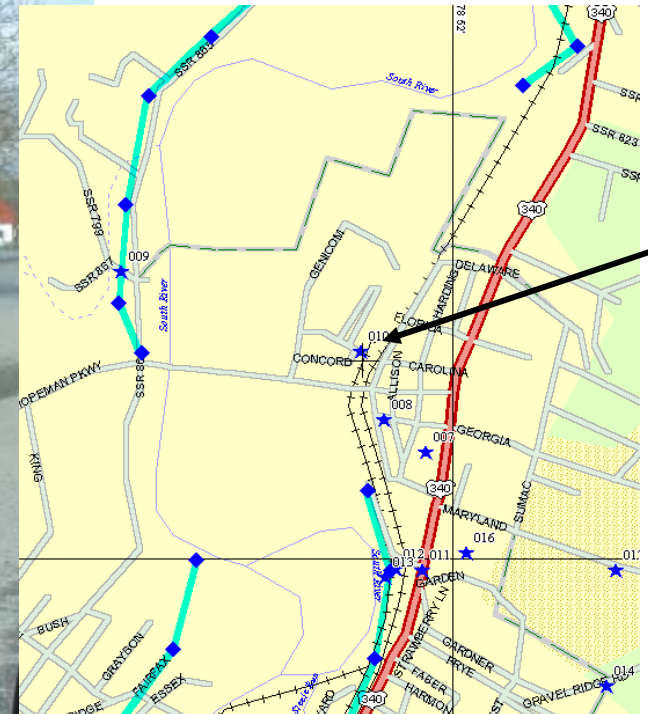
Flooding Near Plant



House on Stilts Near North Park

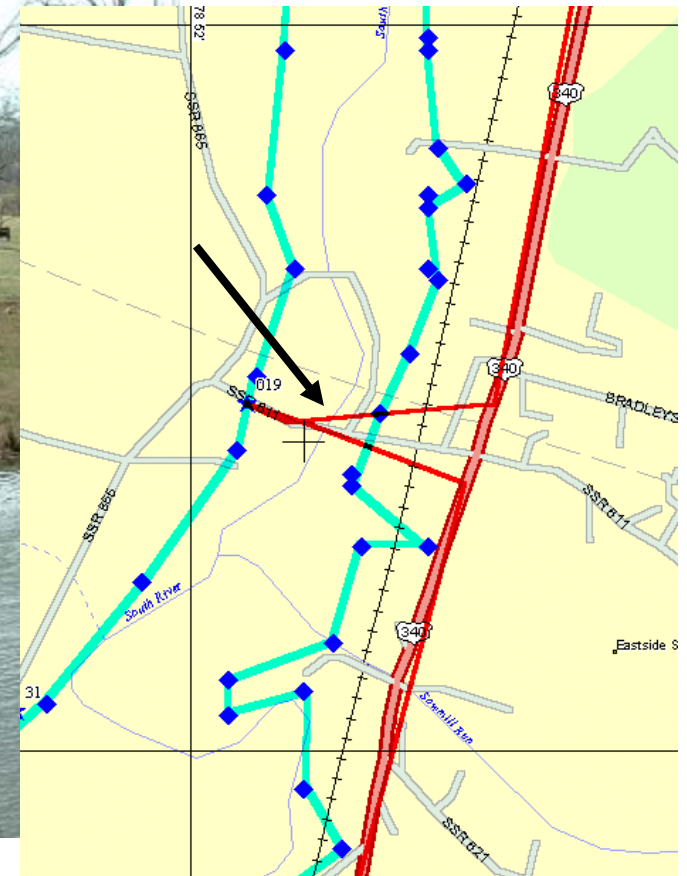


Neighborhood in Floodplain



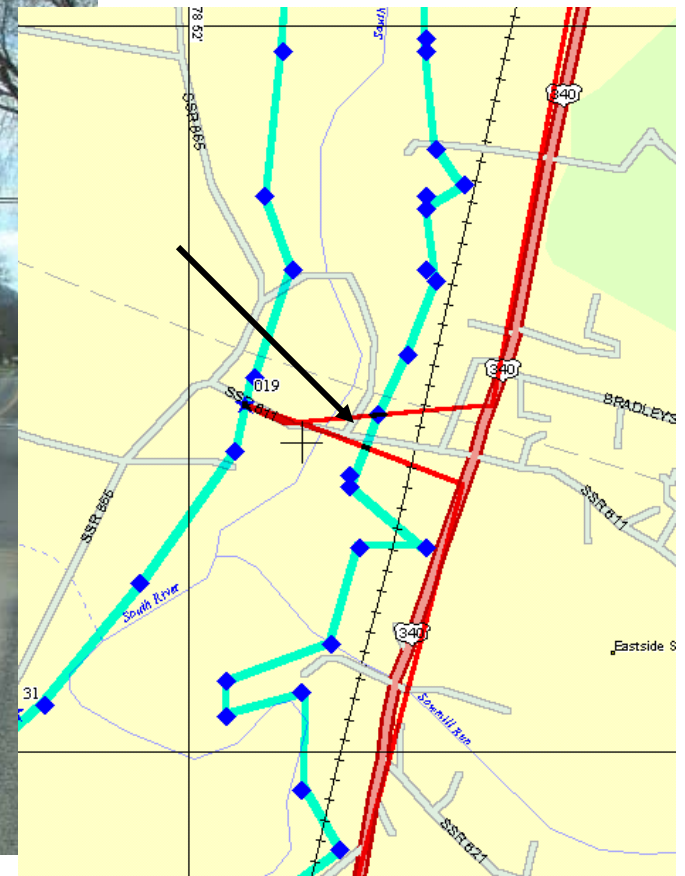
Floodplain Pasture

At Dooms



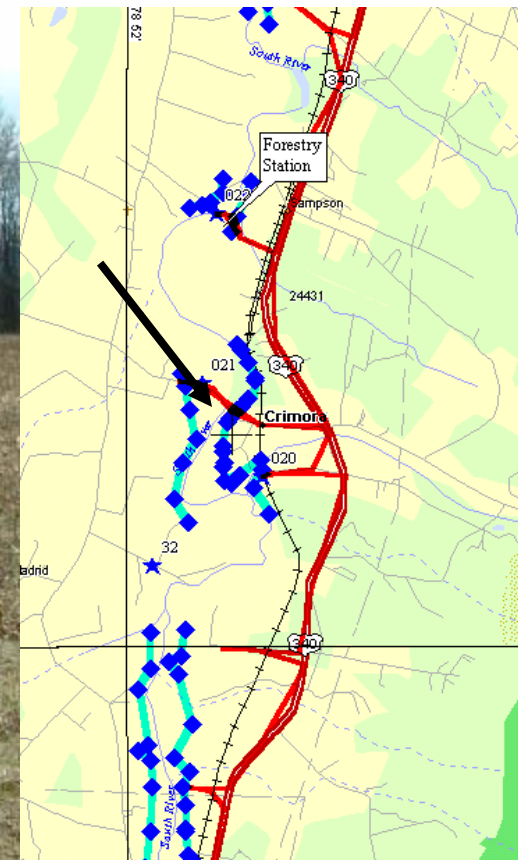
Houses in Floodplain

At Dooms

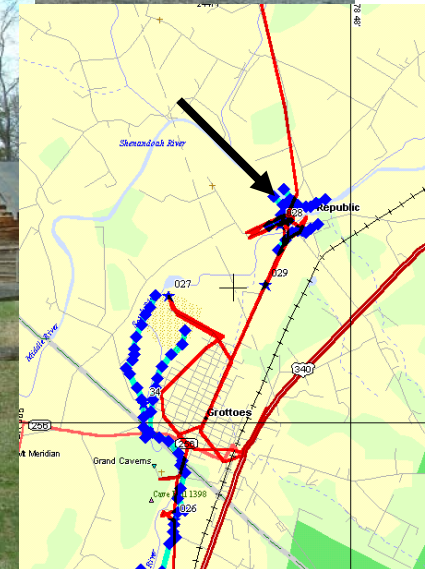


Floodplain Crop Field

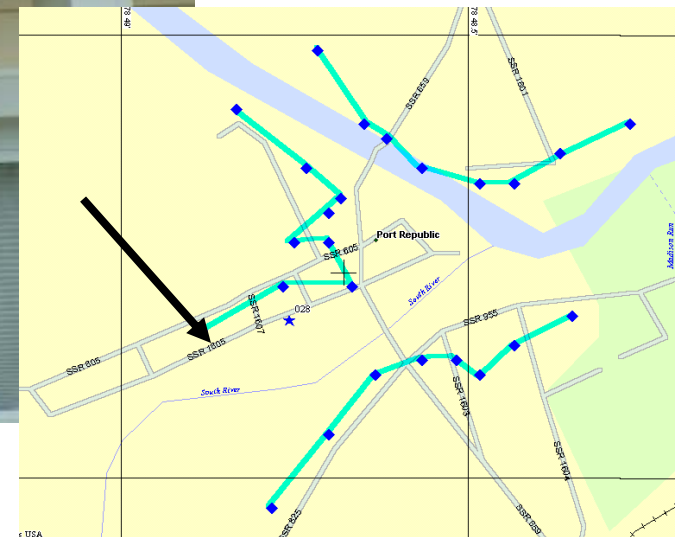
At Crimora



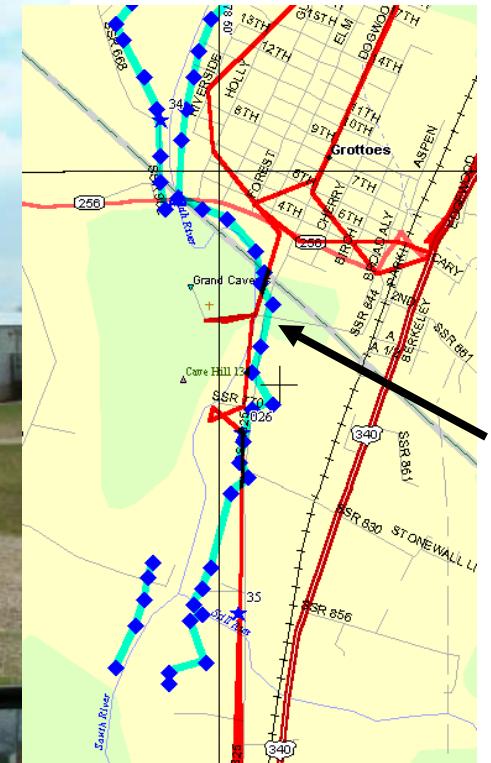
Flooded Port Republic Homes



Named Home in Port Republic



Some Areas Need Questioning



Floodplain Garden Plots

Not very many...



Parks in Floodplain



North Park
in Waynesboro

Also by Grand Caverns
in Grottoes

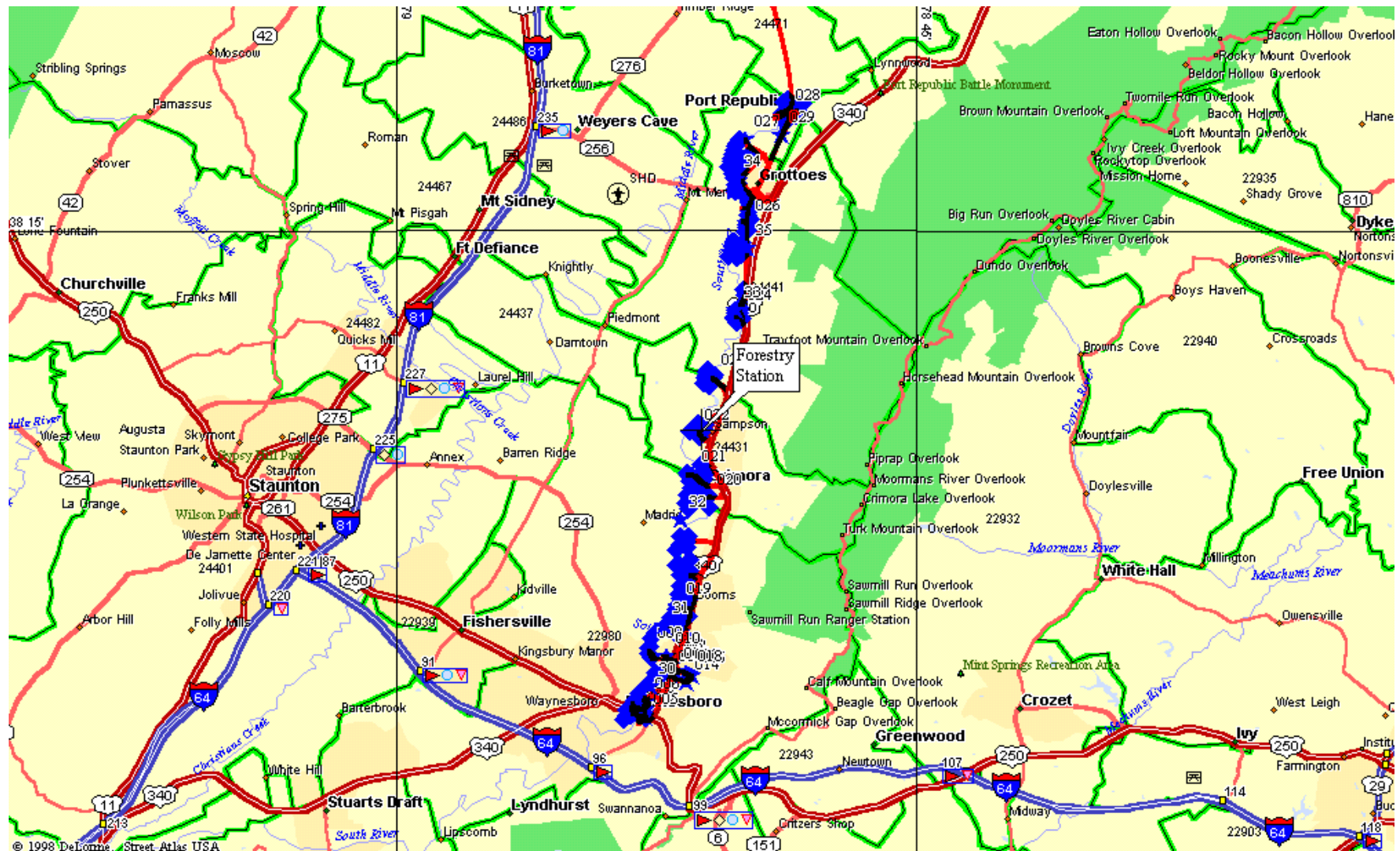
Port Republic



Floodplain Findings

- Central Waynesboro flooded areas not “down range” of plant.
- Residential exposure “down range” is limited. A few 10s of homes.
- Grottoes well laid out. Port Republic less so.
Above floodplain
- Very few vegetable gardens.
- Some areas require survey of locals re actual flood extent.

Location of VA Forestry Station



VA Forestry Station



Forestry Station from Water

Note low elevation of banks on right...



Pump Station from Land Side



Tree Nursery

Farm machinery on site...

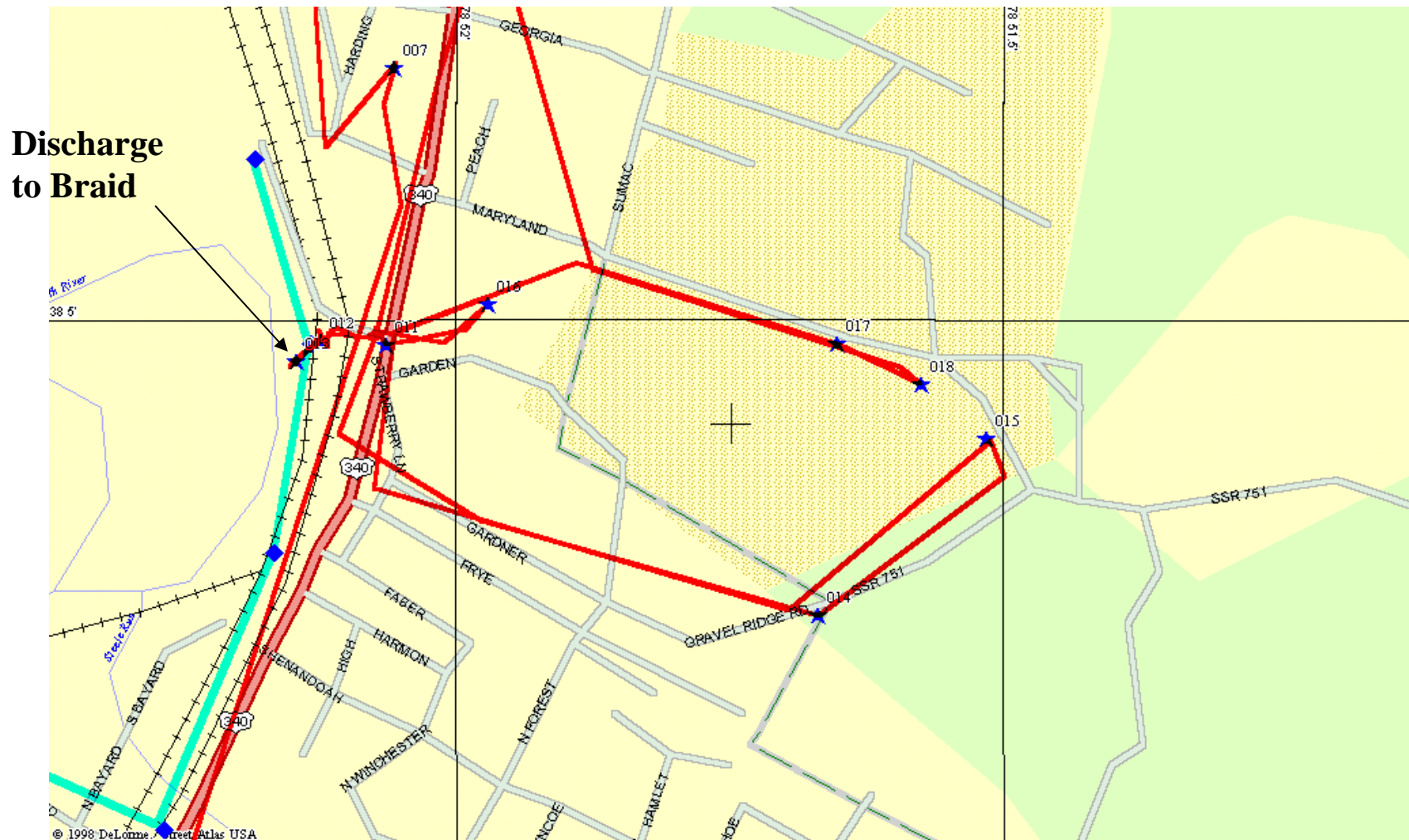


Forestry Station Findings

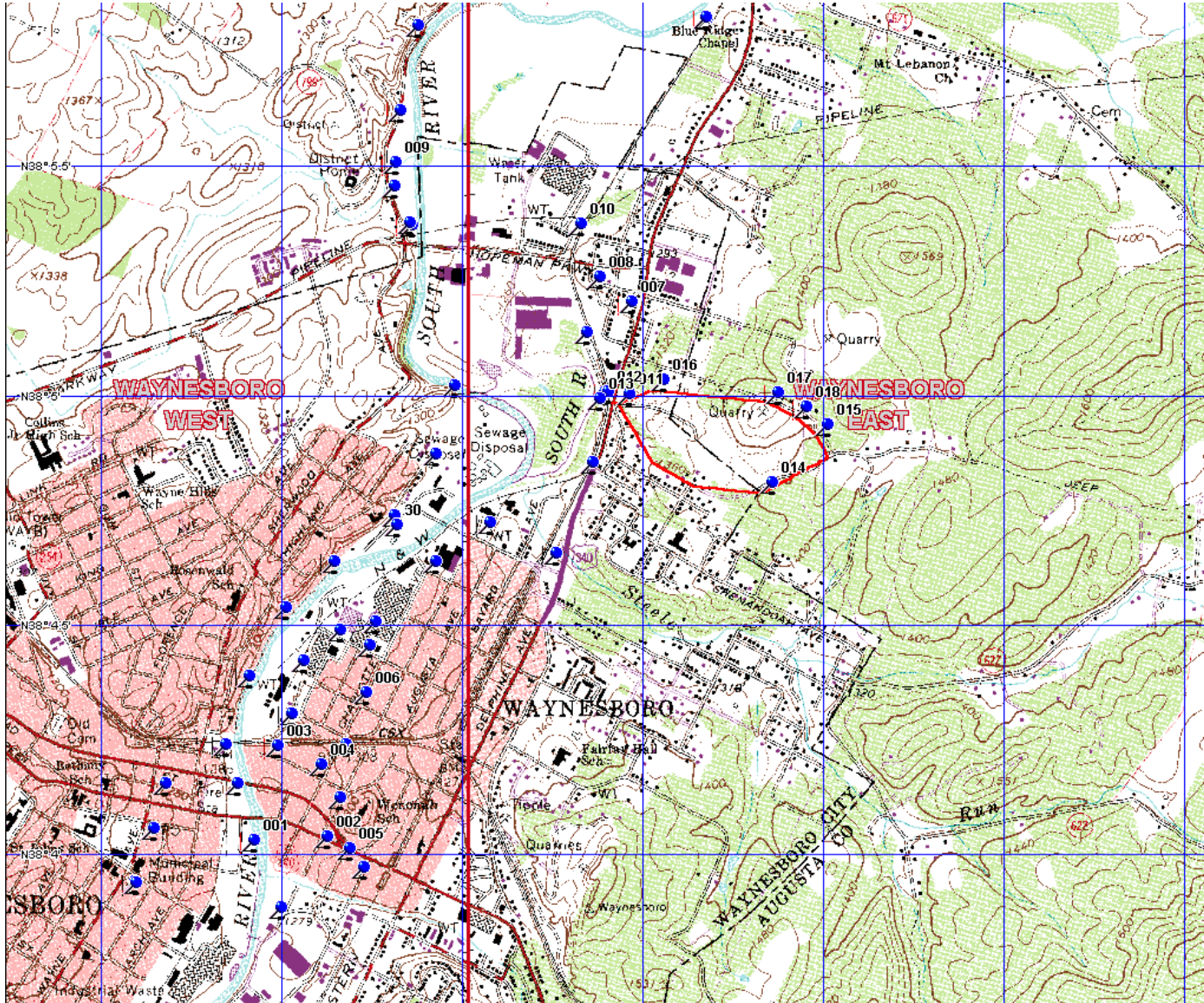
Near Crimora

- Many tilled and untilled acres in the floodplain. Plus reference areas above.
- Technically ideal for sampling or test plots.
- Informal atmosphere. Manager not resident on site. Would gain permission.
- Locally managed by technicians.
- Ample equipment probably available.

Outline of Old Landfill



Topo Map Outline



Landfill Drainage to River



Landfill Drainage to River



Old Landfill Findings

- Surface water “beeline” from landfill base to South River braid
- Designed for fairly high flows
- Braid is probably a dead end, except during high water conditions.
- Mud??