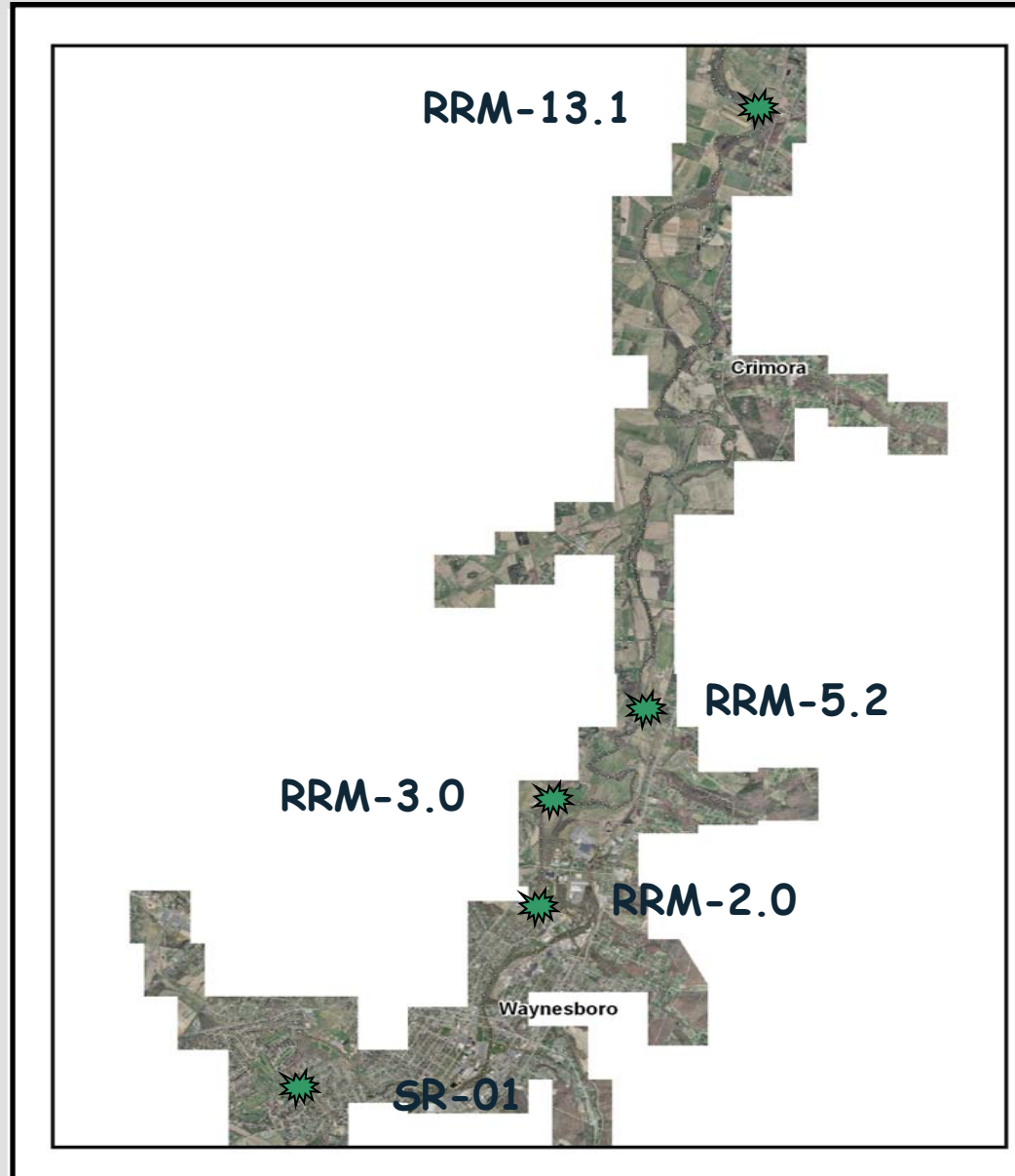


BFC Efforts - Update



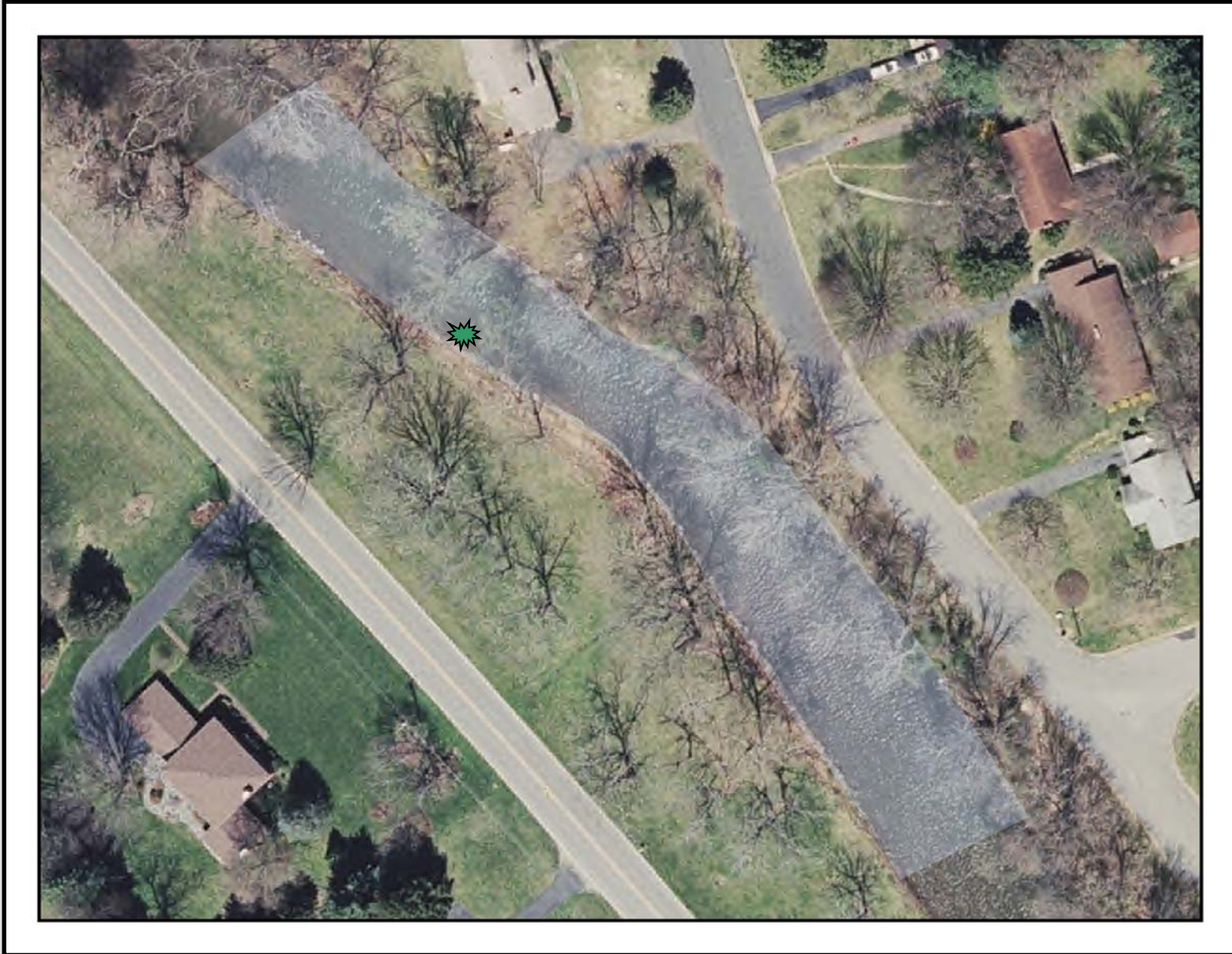
BFC Program Objective

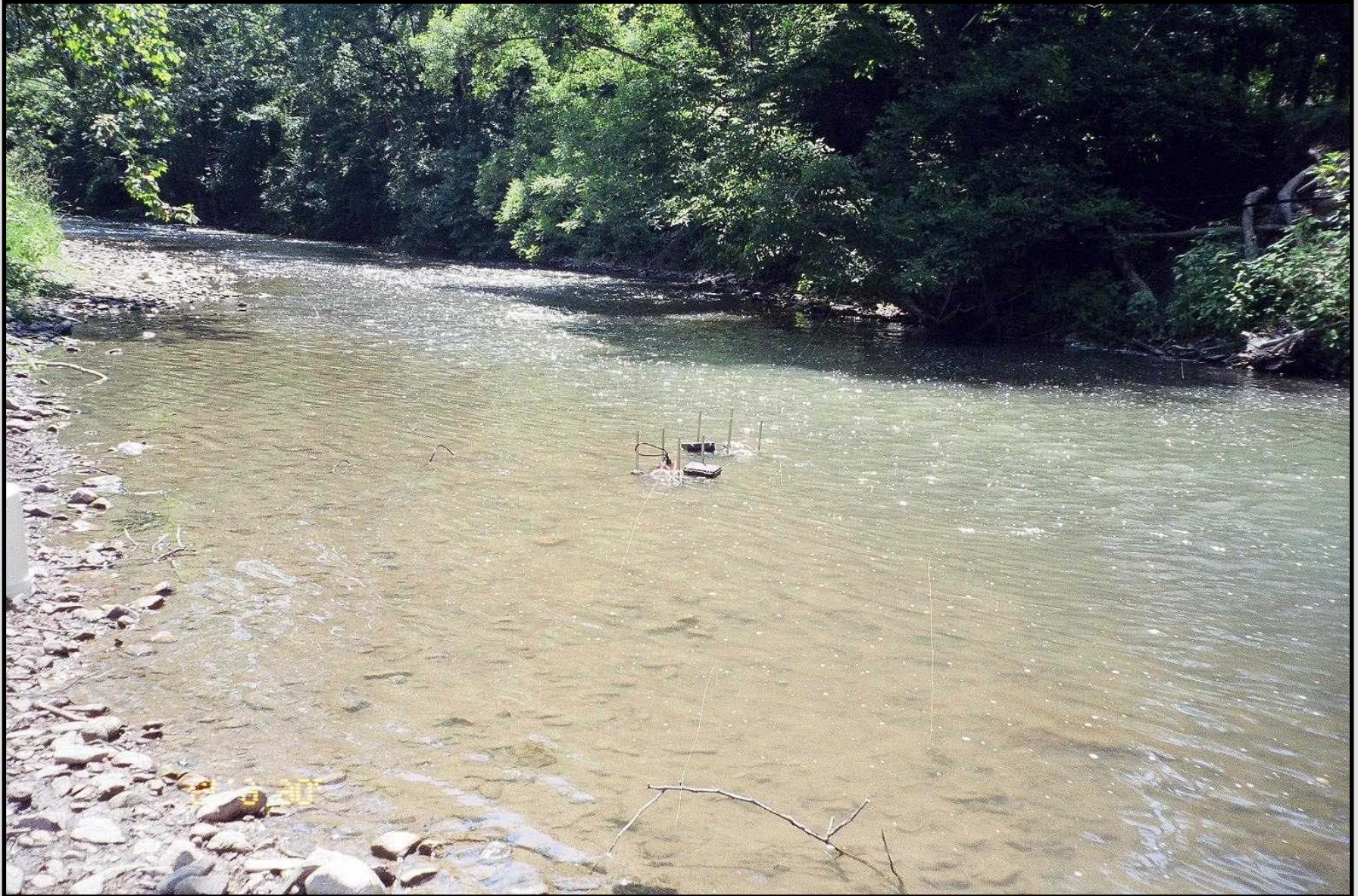
- Direct measurement of THg and MeHg flux from selected areas within the Phase I Experimental Ecological Study Reaches
 - Five mud deposits will be studied
 - Five gravel streambed locations will be studied
- Relative determinations will be made regarding THg and MeHg flux to the surface water

BFC Mud Update

- BFC deployment occurred the week of June 12th
- BFC water samples were collected every hour for 4 hours
- Sediment was collected beneath the BFC afterwards
- Water samples will be analyzed for MeHg and THg
- Sediment samples will be analyzed for THg, MeHg, TOC, and graded by geologist

Experimental Study Reach SR-01







Experimental Study Reach RRM-2.0



Environmental Setting RRM-2.0



Environmental Setting RRM-2.0



Experimental Study Reach RRM-3.0



Environmental Setting RRM-3.0



Environmental Setting RRM-3.0



Experimental Study Reach RRM-5.2



Environmental Setting RRM-5.2



Experimental Study Reach RRM-13.1



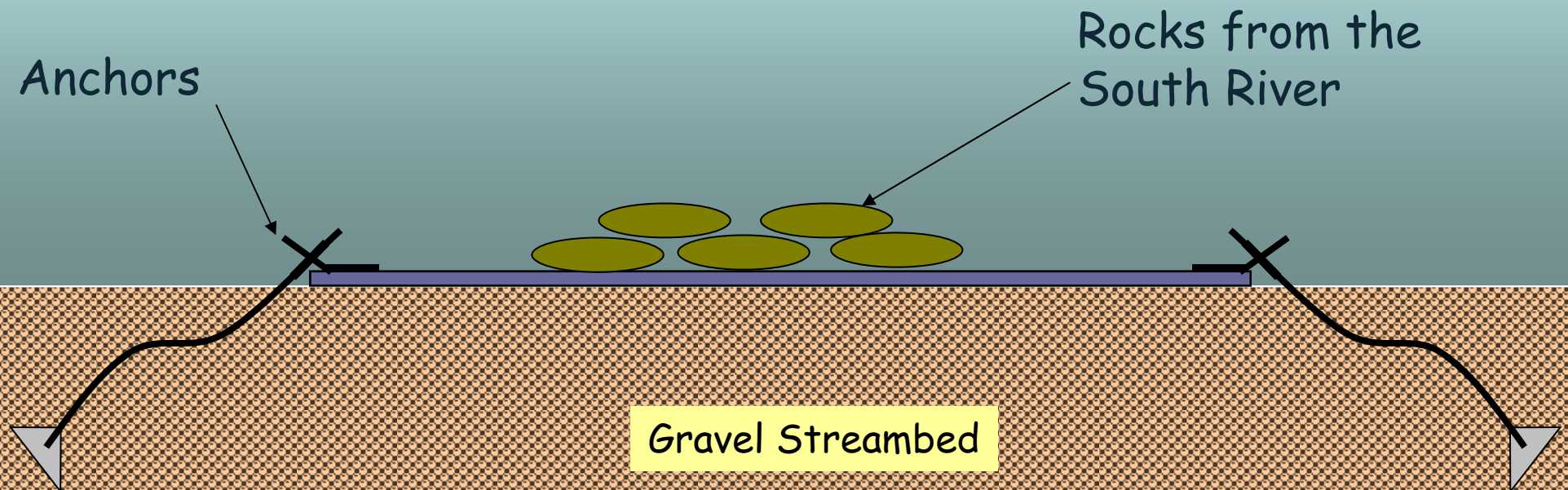
Environmental Setting RRM-13.1



Gravel Streambed Status

- Investigate potential MeHg and THg flux from gravel streambeds
 - Compare results of opaque and transparent BFCs
 - Measure DO, MeHg, and THg
 - Analyze Sediment for THg and MeHg
- Deploy BFC substrate plates next week?
- BFC sampling in August

BFC Gravel Bed Substrate Plate



BFC Efforts - Update

Questions ?