

Floodplain Sampling – Hg Release Age Deposits and Eroding Banks

Strategy – Release Age Deposits

- Sample a total of 42 sites.
- Take 1 core at 37
- Take 2 cores at 5 sites of particular interest
 - Possibly take > 2 if some of the other 37 sites prove too coarse grained to sample (this is likely!)
 - Some cores will be from eroding banks of these deposits
 - Criteria for selecting the 5 focus sites
 - Large deposits
 - Greater amount of silt and clay relative to sand
 - Potential for remobilization through erosion

List of Deposits To Sample

- Many of the deposits downstream of RRM 11.6 will likely be too coarse-grained to bother with....

RM	Side	Category	# of Cores	Field Checked?
2.7-2.8	Right	Point Bar/Bench	1	Yes
2.9-3.0	Right	Point Bar/Bench	1	Yes
3.1	Right	Point Bar/Bench	1	Yes
3.4	Right	Point Bar/Bench	1	Yes
3.5	Left	Point Bar/Bench	1	Yes
3.65	Left	Point Bar/Bench	1	Yes
3.9 -4.1	Left	Point Bar/Bench	2	Yes
4.1	Right	Point Bar/Bench	1	Yes
4.7	Right	Tributary Confluence	1	Yes
4.8-4.9	Right	Mill Dam	2	Yes
5.2	Left	Point Bar/Bench	1	Yes
5.67	Right	Tributary Confluence	1	Yes
6.46	Right	Point Bar/Bench	1	Yes
6.8	Right	Tributary Confluence	1	Yes
7.3 -7.4	Right	Point Bar/Bench	2	Yes
7.6 -7.7	Right	Point Bar/Bench	1	Yes
8.05	Right	Concave Bank Bench	1	Yes
8.07	Left	Point Bar/Bench	1	Yes
8.25	Right	Point Bar/Bench	2	Yes
8.4	Left	Point Bar/Bench	1	Yes
8.48	Left	Concave Bank Bench	1	Yes
8.51	Right	Point Bar/Bench	1	Yes
8.6	Right	Concave Bank Bench	1	Yes
8.6	Left	Point Bar/Bench	1	Yes
8.7	Right	Tributary Confluence	1	Yes
9.2-9.3	Right	Point Bar/Bench	1	Yes
9.3	Left	Tributary Confluence	1	Yes
9.4-9.6	Right	Mill Dam	2	Yes
11.2 -11.6	Right	Mill Dam	1	Yes
13.7	Right	Point Bar/Bench	1	No
15.3	Right	Point Bar/Bench	1	Yes
16.2	Left	Point Bar/Bench	1	No
16.4	Right	Point Bar / Trib?	1	No
17.4	Right	Point Bar/Bench	1	No
17.6	Right	?	1	No
18.75	Right	Mill Dam	1	No
19.1	Left	Mill Dam	1	No
20.2	Both	Mill Dam	1	No
20.95	Left	?	1	No
21.1-21.4	Left	Point Bar/Bench	1	No
21.5	Left	Point Bar/Bench	1	No
22.8	Left	Mill Dam	1	No
23-23.1	Left	Point Bar/Bench	1	No
23.3-23.5	Right	Mill Dam	1	No
23.4-23.5	Left	Mill Dam	1	No
23.6	Left	Mill Dam	1	No
23.9	Left	?	1	No



"focus" sites where 2 cores will be taken

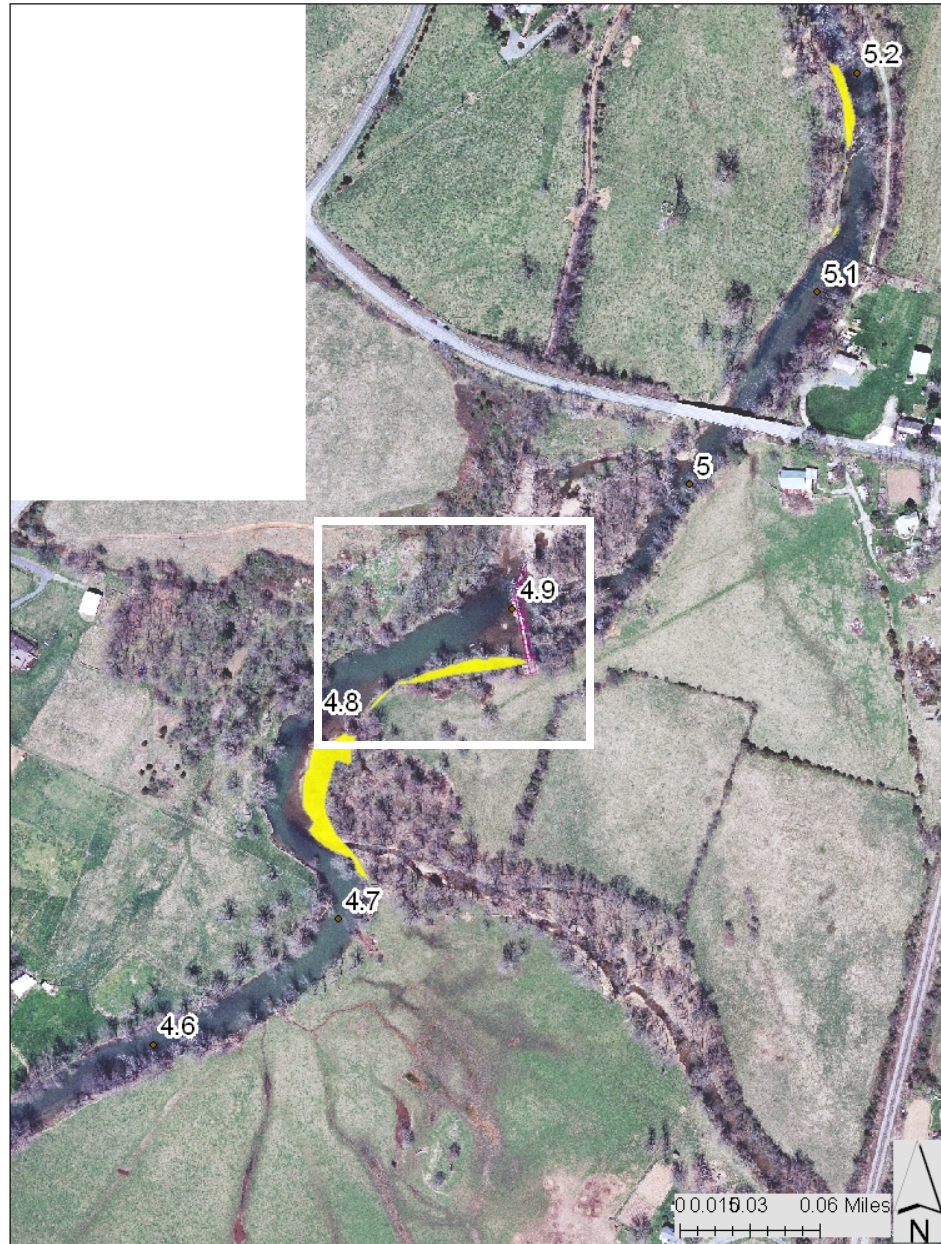
sites likely to be deleted to provide "extra" samples for focus sites

Maps Showing The 5 “Focus” Sites Follow

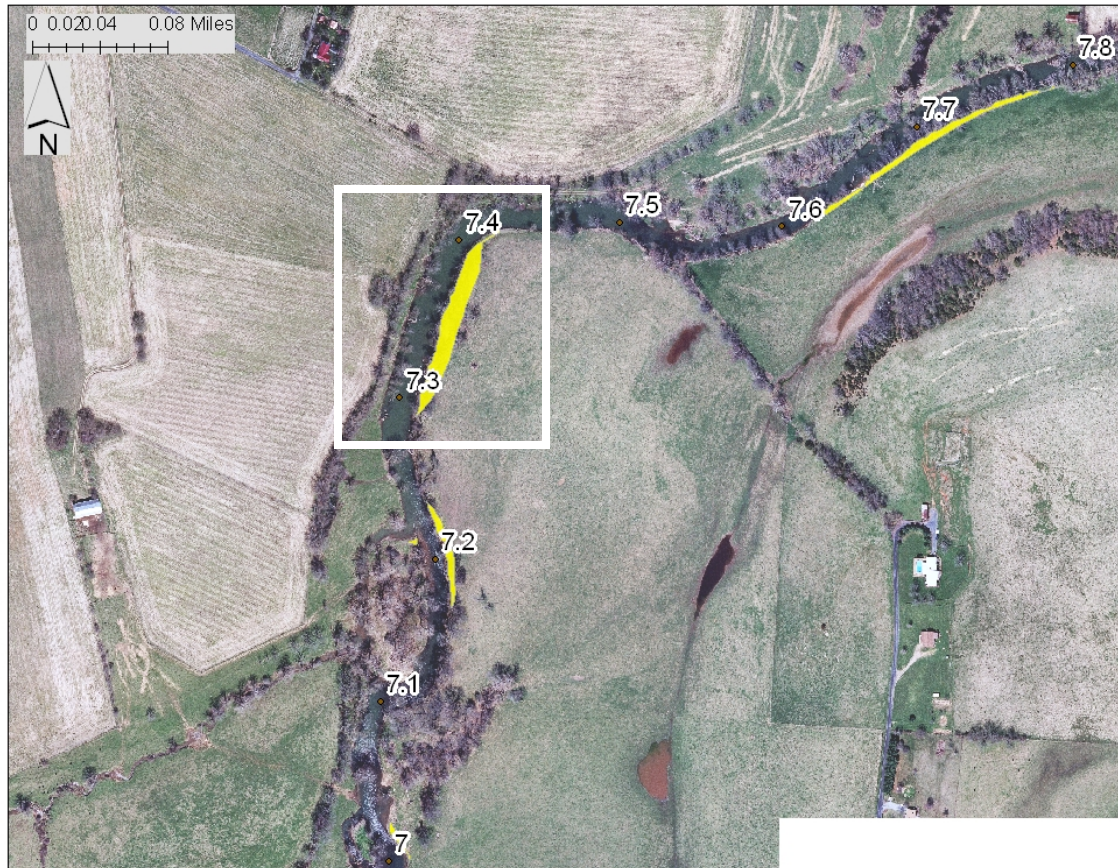
RRM 3.9-4.0



RRM 4.8-4.9



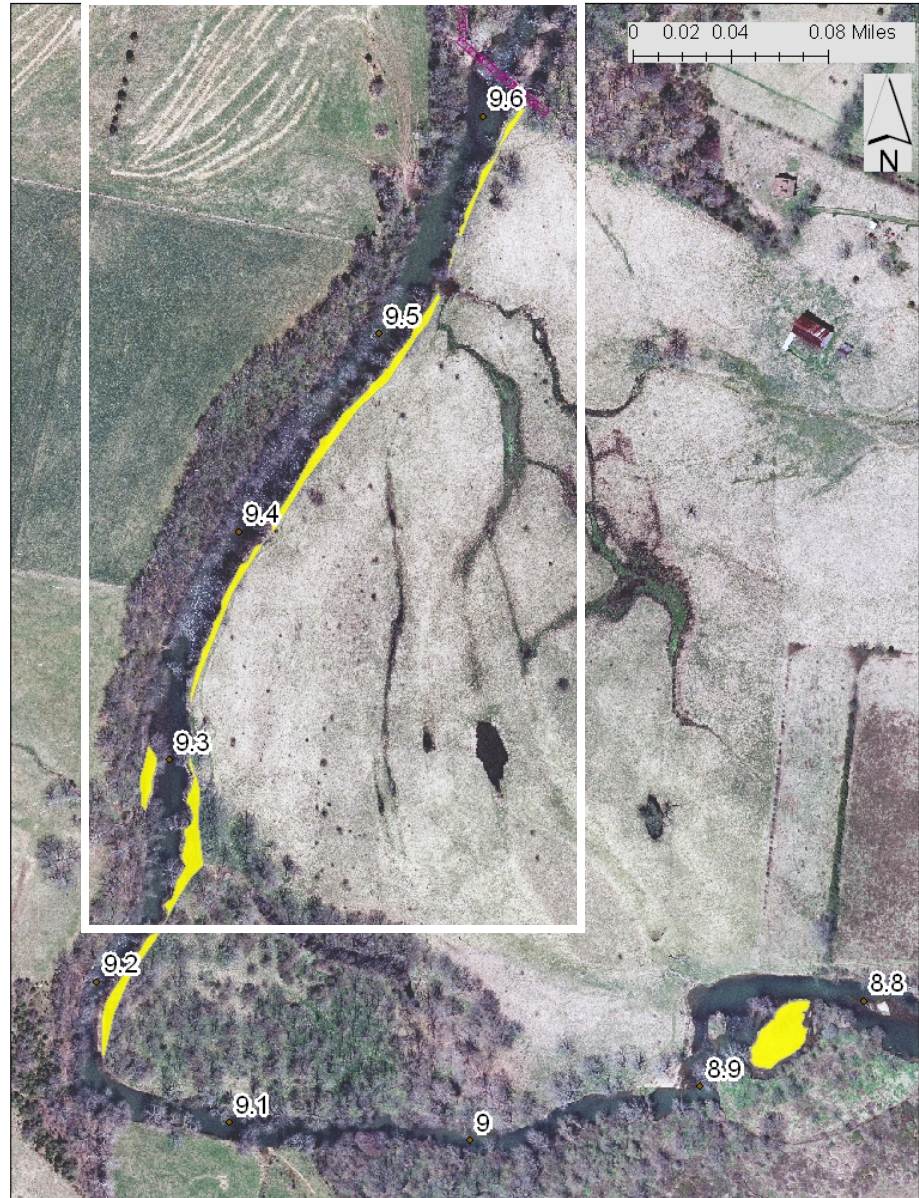
RRM 7.3-7.4



RRM 8.25



RRM 9.3-9.6



Sampling Plan For Eroding Bank/ LIDAR Survey Sites

(note – all of these banks
were surveyed in 2006-7)

Survey 1 vertical profile at each
Of these eroding banks!

Number	From (RRM)	To (RRM)	Side
1	1.55	1.65	Right
2	1.7	1.8	Right
3	2.15	2.17	Right
4	2.88	3	Left
5	3.47	3.52	Right
6	4.7	4.8	Left
7	5.35	5.351	Left
8	5.37	5.4	Right
9	7.25	7.4	Left
10	7.7	7.8	Left
11	8.2	8.3	Left
12	8.5	8.53	Left
13	8.7	8.78	Left
14	8.8	8.9	Right
15	9.7	9.8	Left
16	13.05	13.15	Right
17	15.3	15.4	Left
18	15.4	15.42	Left
19	22.3	22.4	Right
20	22.42	22.6	Right
21	22.6	22.61	Left
22	23.04	23.15	Right

Total Number of Samples

Type of Site	Number of Sites	Number of Cores	Typical Depth (m)	Sampling Interval, 0-.6 meters(m)	Sampling Interval, >0.6 meters(m)	Number of Samples
Floodplain	42	47	1.5	0.15	0.30	326
Eroding Bank	22	22	2	0.15	0.30	404
					TOTAL	730