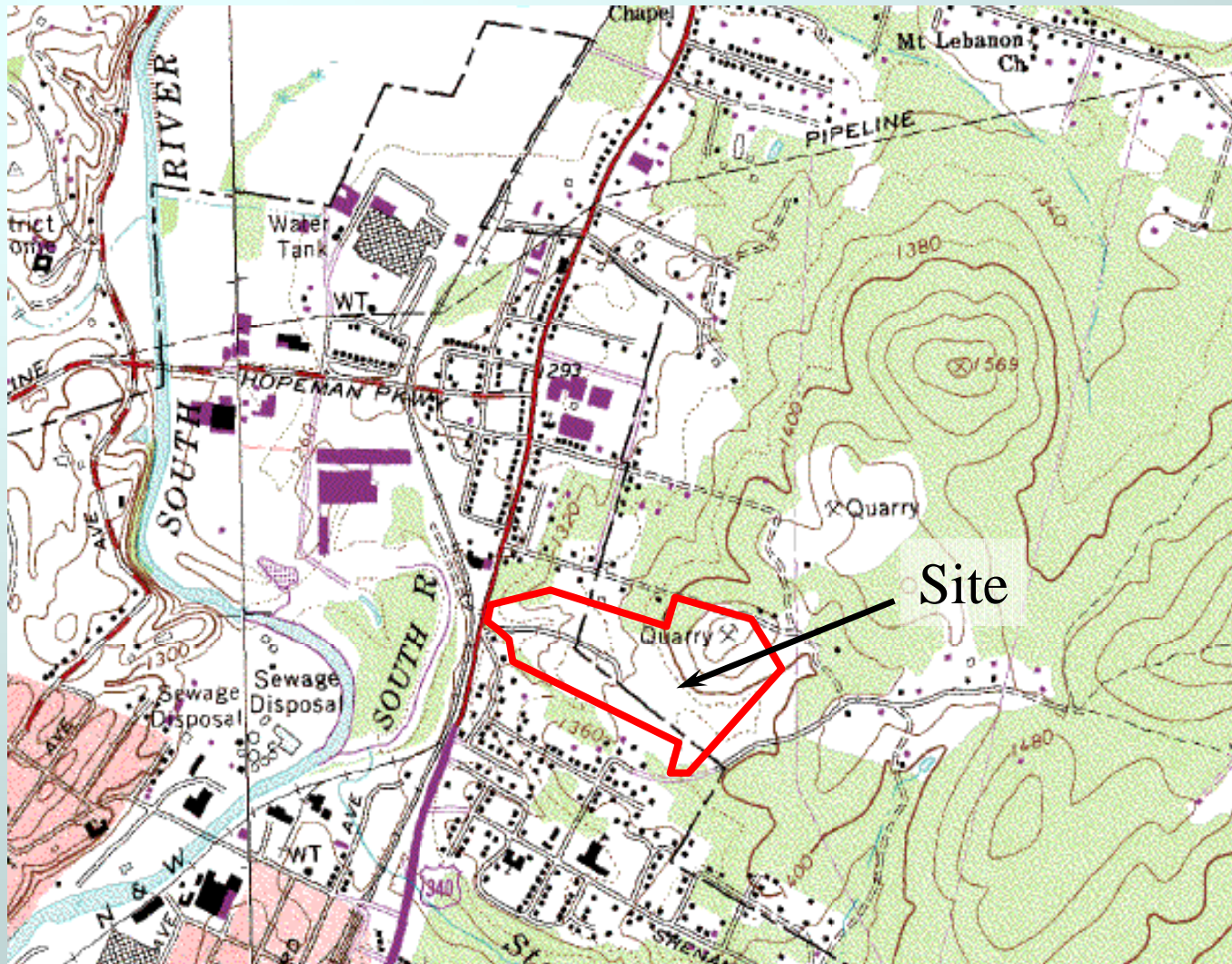


Old Waynesboro Municipal Landfill Investigation Scope of Work

South River Science Team Meeting

July 10, 2002

Waynesboro Municipal Landfill - Site Location Map



Waynesboro Municipal Landfill - 1965 Aerial Photo



Waynesboro Municipal Landfill

- Operational History
 - Mid-1940s? to 1982
 - Small dump site in 1949 (from aerial photo)
 - City of Waynesboro began use as sanitary landfill in ~ 1962
 - Municipal and Industrial waste disposal at the site from ~ 1960 to 1982
 - GE and DuPont main industrial disposers
 - DuPont - inorganics, resins, ketones, aldehydes
 - Hg wastes unlikely due to time frame - stopped off-site sludge disposal in 1945
 - GE - mixed oils, chlorinated solvents, flammable solvents and paint sludge
- No indication of previous quarrying operations -filled ravine

Waynesboro Municipal Landfill

- Leachate collection in 1988 (current?)
 - Diversion trench surrounding landfill on south, east, and north sides
 - surface water and leachate seeps
 - discharges to leachate collection pond
 - Leachate collection pond at west end, where bottom of ravine was located
 - Leachate pond discharges to old South River channel via culvert under Rt. 340 and dry stream bed
 - to current South River Channel during high flow ?

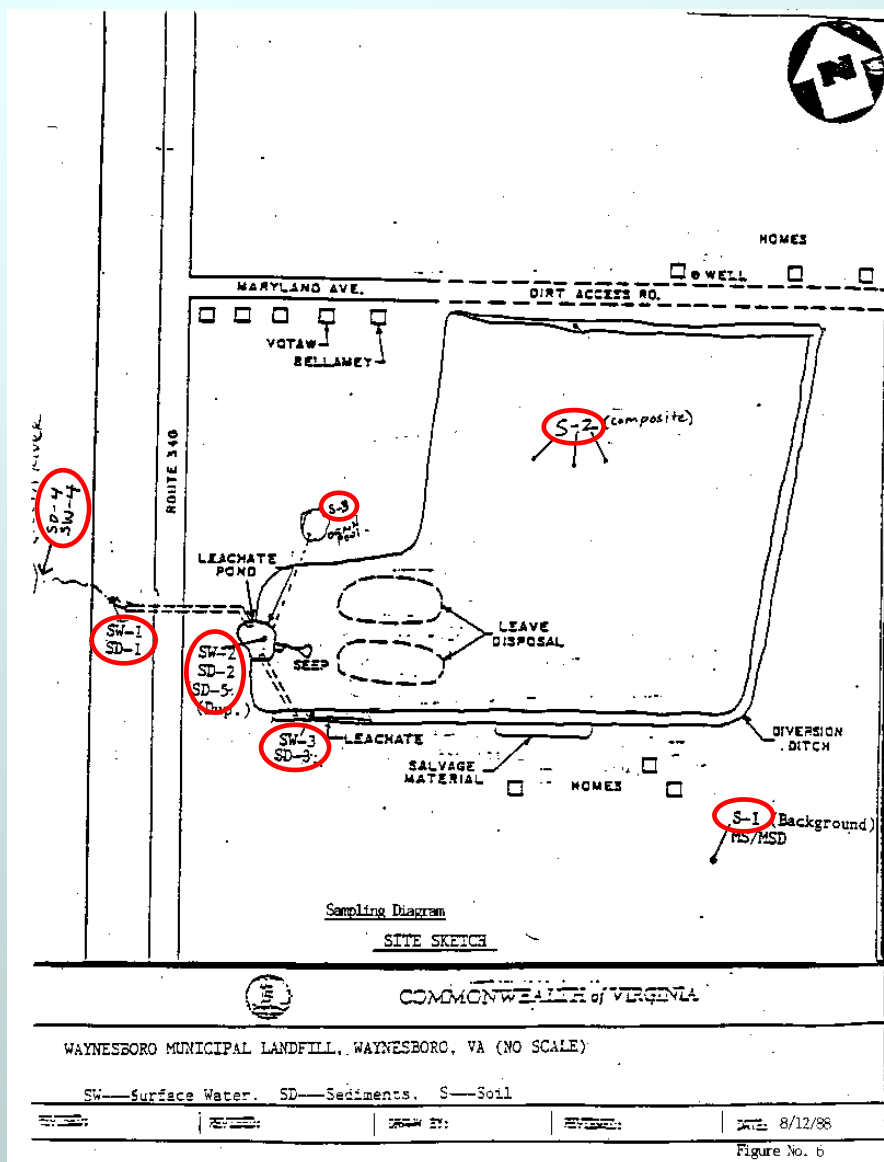
EPA Investigations

- Preliminary Assessment - 1986
 - Desk study and site visit
- Site Investigation - 1988
 - Soil, groundwater, leachate/surface water, and sediment sampling
 - 3 surficial soil samples
 - 4 sediment samples
 - 4 surface water samples
 - 2 groundwater samples from residential wells
 - Samples analyzed for TCL inorganics (inc. Hg) and organics

EPA Findings

- No mercury contamination identified
- Metals - antimony, barium, calcium, chromium, lead, silver, cobalt
- Organics - PAHs, toluene, benzoic acid, and 4-methyl phenol
- All hits were relatively low concentrations

EPA 1988 Site Investigation Map



Soil samples:

- S-1 - background
- S-2 - leachate seeps at center of LF
- S-3 - drain pool

Sediment samples:

- SD-1 - stream bed
- SD-2 - leachate pond
- SD-3 - diversion ditch
- SD-4 - South River / stream confluence
- SD-5 - duplicate

SW samples:

- SW-1 - culvert / stream
- SW-2 - leachate pond
- SW-3 - diversion ditch
- SW-4 - South River / stream confluence

Proposed Confirmatory Investigation

- Objectives:
 - Verify Hg results from EPA's 1988 site investigation
 - Determine if Hg is present in the shallow gw between landfill and South River
- Scope:
 - 4 sediment and 2 soil samples from 0-2 ft. BGS using a geoprobe or hand auger
 - 4 surface water samples using hand bailer or sample jar
 - 2 hydropunch groundwater samples from uppermost saturated zone between the landfill and the river using a geoprobe rig
 - All samples analyzed for Hg (total and dissolved in aqueous samples)
- Schedule:
 - 4th quarter 2002

Waynesboro Municipal Landfill - Proposed Investigation Plan

