

Augusta County



APRIL 10, 2019

NRDAR Funded Projects Augusta County

Jennings Branch - Churchville

- New life to an old project
- Streambank rehabilitation
- SR 42 (N) to Hotchkiss Rd
- Approximately 3780 lf “Bridge to Bridge” along the N side of US 250 in downtown Churchville
- ~257 lb/yr P reduction
- ~\$568,000

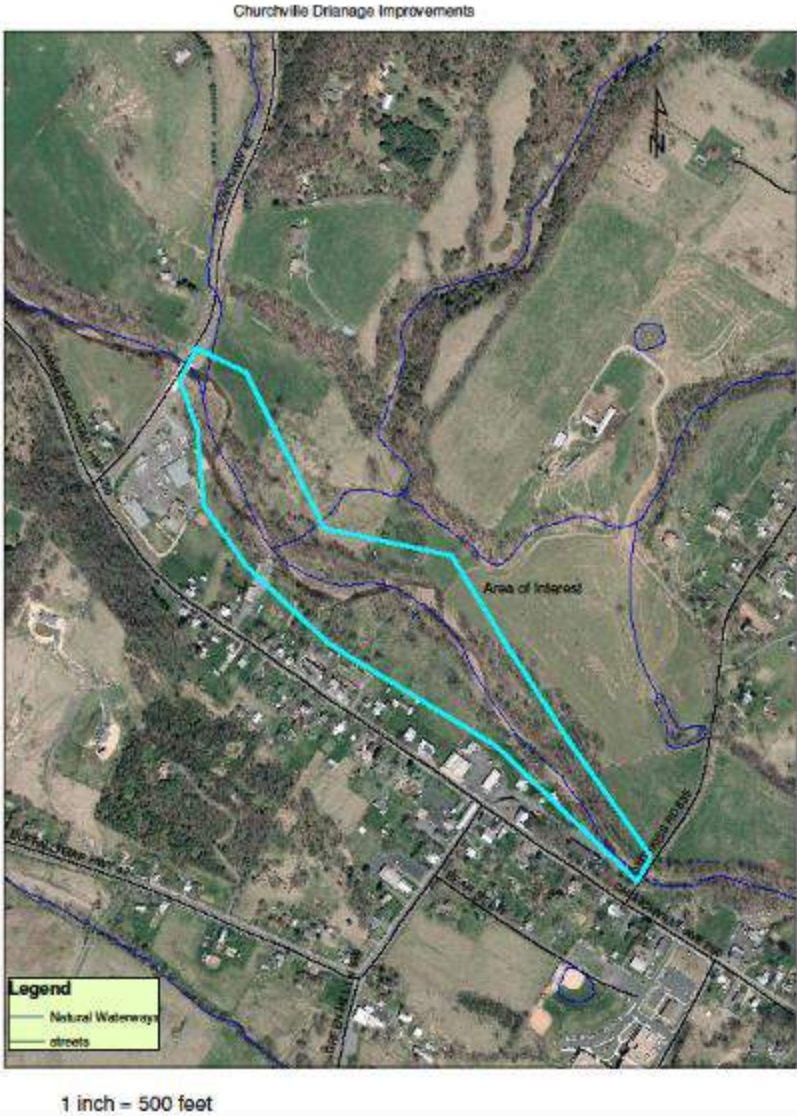
Dooms Crossing – N of Waynesboro

- Streambank rehabilitation
- Approximately 600 lf
- Dam removal
- Debris removal
- ~6 acres land acquisition
- ~34 lb/yr P reduction
- ~\$388,000

Jennings Branch



Source: Newsleader



Jennings Branch

Rt 42 Bridge



Eroded bank



Jennings Branch



Jennings Branch - Status

- Engineer – EGS & Associates
 - Sub - Blueline Environmental – Natural Stream Channel Design
- Boundary and feature survey complete
- 30% Design plans complete – review by DEQ
- Complete design this spring / summer

Dooms Crossing



Dam remnant from eastern river bank



Dam remnant and woody debris from eastern abutment



Logjam blocking raceway entrance



Eroded streambanks



Dooms Crossing - Status

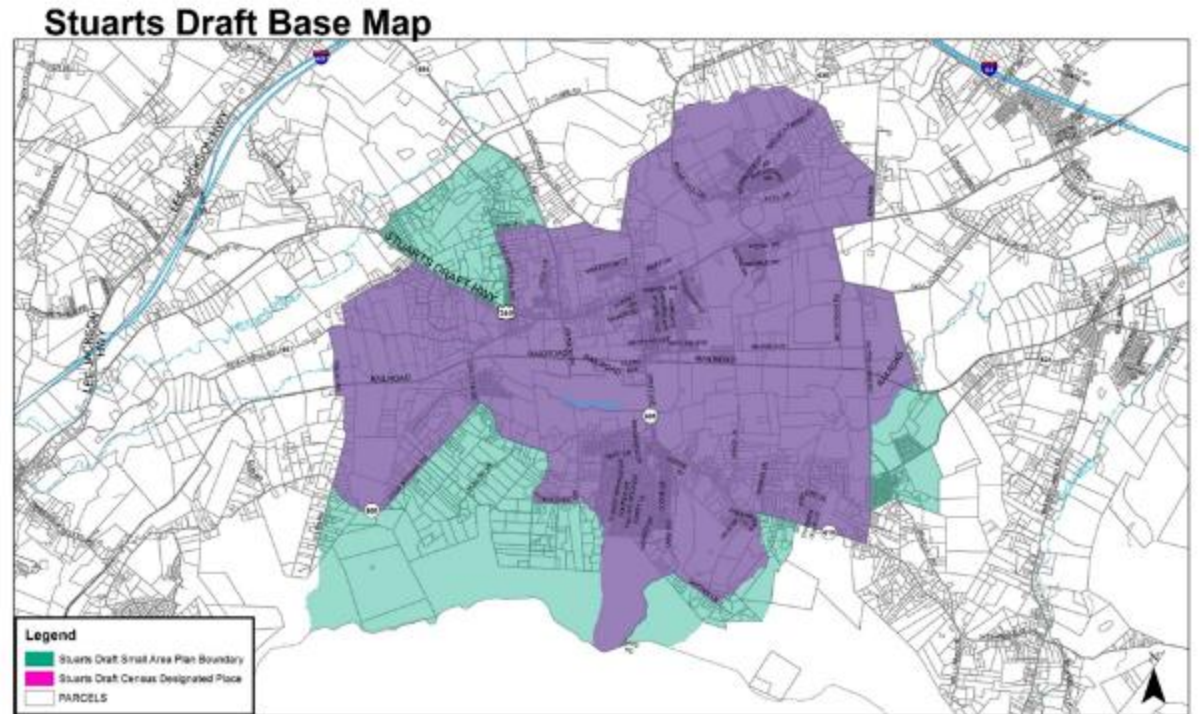
- Engineer EGS & Associates
 - Stream restoration and dam removal design by DGIF
- Appraisal complete – landowner negotiations
 - Future recreational access point
- Short delay pending additional Hg testing
- Boundary and feature survey underway
- Phase I ESA underway
- Clearance from Department of Historical Resources
- Design this spring / summer

Watershed Organization?

Stuarts Draft Small Area Plan

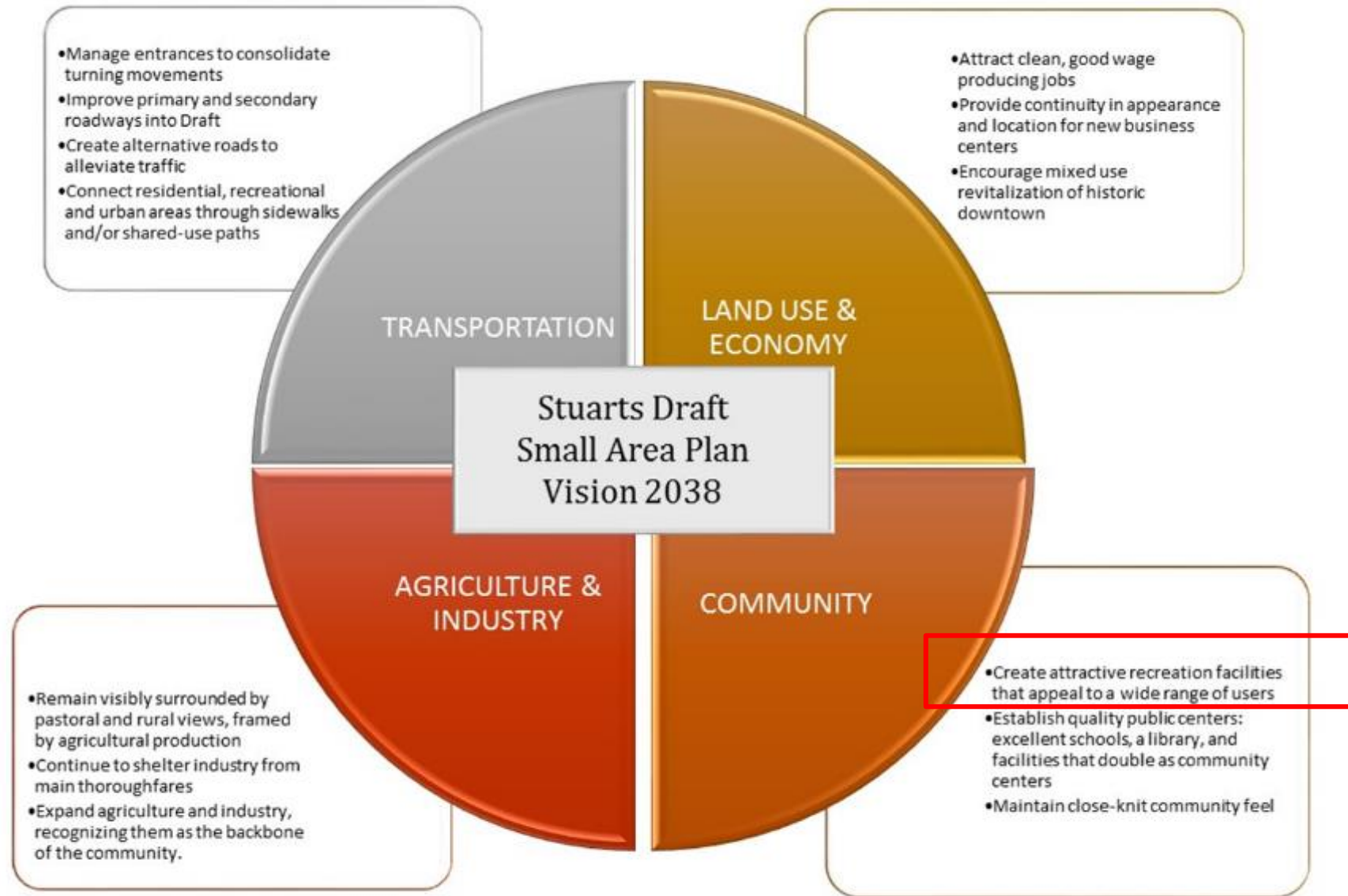
Overall Plan Goals:

- Support Agricultural and Industrial Heritage
- Support Effective Land Use Planning
- Strong Sense of Community
- Efficient Multi-modal Transportation Network



Themes from the Stuarts Draft Small Area Plan

- Description of Stuarts Draft from the Small Area Plan
 - Agriculture, Industry, Families, Ample natural resources, recreational possibilities
- Cohesive planning and living
- Walkable, Vistas
- Framed by agricultural industry



Goal 1: Establish and maintain parks and recreational facilities that are efficient, effective, and readily available to all residents of the Stuarts Draft small area.

Objective A: Create alternative transportation opportunities to connect open space and recreational opportunities.

- Policy 1: Evaluate possibility of constructing a separate shared-use path crossing so pedestrians and cyclists can avoid the narrow bridge on Draft Avenue.

Objective B: Expand park, community, and greenspace facilities.

- Policy 1: Identify land for park expansion. The County should work to find appropriate locations for the expansion of park facilities. Such sites should allow for incremental park expansions to existing Schneider Park.

- Policy 2: Additional greenspace. Set aside additional land for open space along Route 340 so as to create pockets of potential recreational opportunities amongst development areas.

- Policy 3: Community Center. The County should work to find appropriate locations to utilize an existing building or identify a vacant site for the development of a community center.

- Policy 4: Greenway. The County should pursue grant funding for the development of a greenway and other open space facilities along the South River.

- Policy 4: Collaboration. The County should continue to support non-county owned recreational facilities within the small area, recognizing such facilities as valuable community assets.

Stuarts Draft Stormwater Focus Areas Map

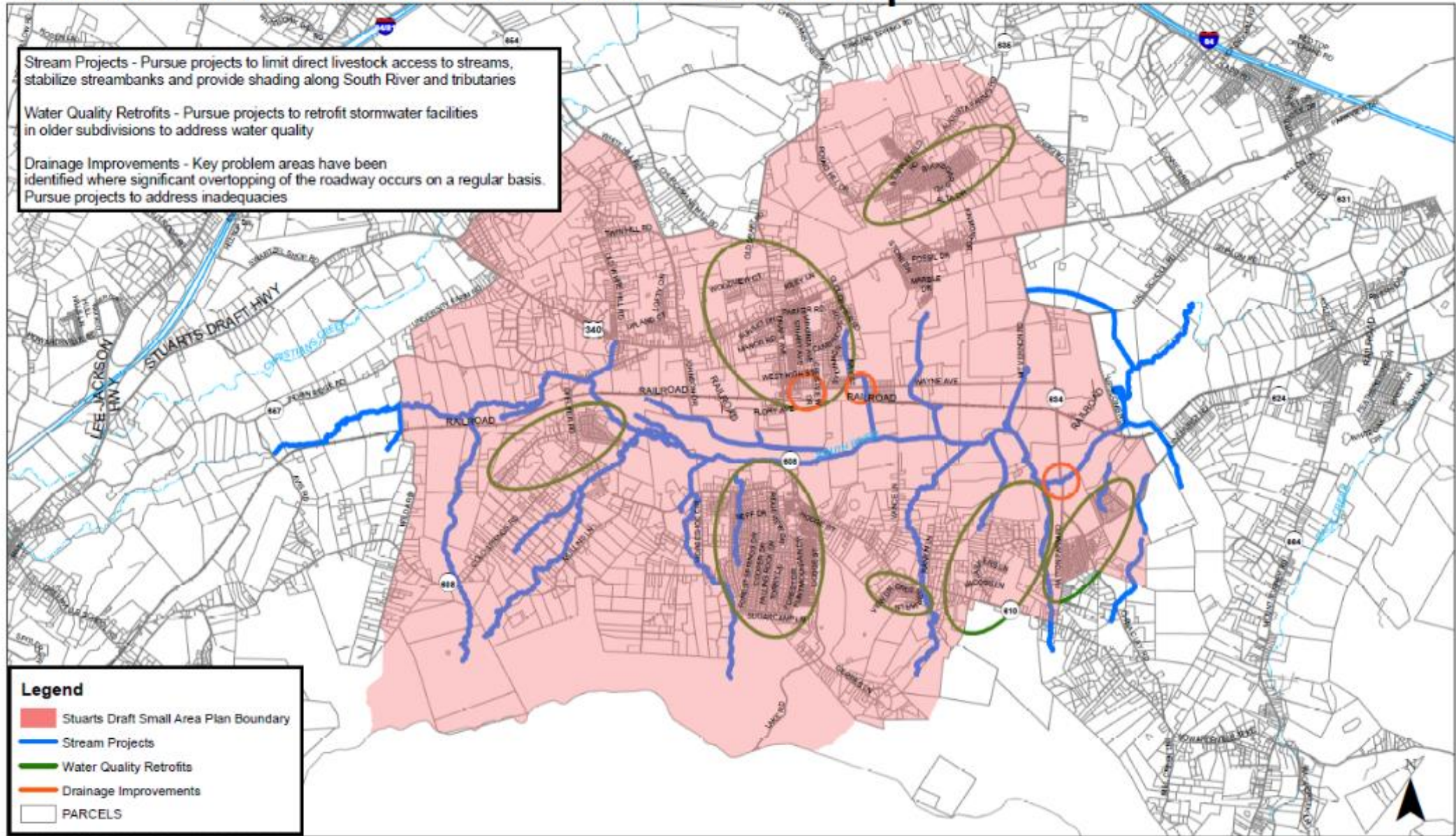
Stream Projects - Pursue projects to limit direct livestock access to streams, stabilize streambanks and provide shading along South River and tributaries

Water Quality Retrofits - Pursue projects to retrofit stormwater facilities in older subdivisions to address water quality

Drainage Improvements - Key problem areas have been identified where significant overtopping of the roadway occurs on a regular basis. Pursue projects to address inadequacies

Legend

- Stuarts Draft Small Area Plan Boundary
- Stream Projects
- Water Quality Retrofits
- Drainage Improvements
- PARCELS



Watershed Organization?

- Can help guide implementation of the Small Area Plan
- Protect, enhance, and embrace our unique natural resources
 - Cold water springs
 - Sinkhole ponds
 - Cowbane preserve
- Pursue concept of a Greenway along South River